

SIXTH FORM COURSE INFORMATION 2026-28

ROYAL
ALEXANDRA
& ALBERT
SCHOOL





CONTENTS

Introduction	2	French	21
Meet the Team	3	Geography	22
The Sixth Form	4	Health and Social Care AAQ	23
Subject Entry Criteria	9	History	24
Accountancy	12	Information Technology AAQ	25
Art and Design	13	Mathematics	26
Biology	14	Mathematics – Further	27
Business Studies	15	Media Studies	28
Chemistry	16	Physics	29
Computing	17	Psychology	30
Design Technology – Product Design	18	Sociology	31
Economics	19	Spanish	32
English Literature	20		



The Sixth Form at the Royal Alexandra and Albert School is focused on developing a well-rounded student who is ready to not only meet their future head on and be an integral part of the world around them but also, crucially, to change it. To make their mark, to have a voice and to be heard. The skills, personal education and academic focus we strive to instil work to develop each of these goals.

Having spent two years with us undertaking A Levels, students will be well equipped to understand and facilitate their professional future. They will have all the skills and qualities to succeed as an undergraduate or on a top-level apprenticeship. Our bespoke Futures Programme gives them the guidance and structure needed to make the right, informed decisions about their future.

Education at Sixth Form is about academic success but this only comes when students are given the opportunity to learn about themselves and their future. The Royal Alexandra and Albert School offers a holistic programme whereby students are encouraged to take part in the community: volunteer, lead and get involved across the school. Upon leaving us, our students are able to negotiate personal life and have an awareness of their psychological and emotional wellbeing.

The Sixth Form Team





Mr David Brackpool - Director of Sixth Form

Mr Brackpool has 12 years' experience teaching and leading various aspects of Sixth Form. He runs the Extended Project Qualification course as well as teaching English Literature and Sociology. He has been a Head of Year 12, Head of Year 13 and a tutor across all age groups. Mr Brackpool graduated from the University of Sussex and UCL with a bachelor's degree in Philosophy and Masters degrees in both English Literature and Psychoanalysis.



Ms Donna Bedford - Deputy Director of Key Stage 5

Ms Bedford previously worked in the further education sector from 2004 to 2014 before transitioning into secondary education in 2014. At RAAS, she leads on achievement, standards, and inclusion initiatives within the sixth form, and in addition to her responsibilities as Deputy Director of Sixth Form, she also teaches mathematics. In two of her previous secondary schools, Ms Bedford held curriculum leader positions. She holds a bachelor's degree in Secondary Mathematics Education with QTS from the University of Brighton.



Miss Alexandra Hunter - Key Stage 5 Destinations Coordinator

Miss Hunter has been teaching for four years. She teaches English and Drama and has been a form tutor across Key Stage 4 and 5. She has been the High Potential Achiever Coordinator across all year groups. Miss Hunter graduated from the University of Hull with a bachelor's degree in Politics and International Relations and a master's degree in English Literature and Creative Writing.



FULL BOARDING

These places allow students to live at the school during term time, with the option of returning home at weekends. As our boarders come from the UK and overseas, our boarding houses remain vibrant places during the weekend.

NON-BOARDING

This is our equivalent of a day place, and our non-boarding students usually live within close proximity to the school. They can access the school facilities for an extended period, including evening access to the Sixth Form study areas in the Sunley Centre recently developed G6 Sixth Form centre and the Gatton 6 building. Non-boarding students have no requirement to board.

Students who join us on the Sixth Form Non-Boarding package gain access to Gatton 6 and the amenities of their linked boarding house from 7.30am, during break and lunch, and after school until 8.00pm, Monday to Friday. Please note specific timings apply for each location.

Unlike in the Junior and Senior schools, Sixth Formers do not have to attend Saturday morning enrichment. This is optional. While students are encouraged to engage in enrichment activities, they are also free to dedicate their Saturday mornings to part-time employment, volunteering, academic study, driving lessons, or simply relaxation.



PASTORAL CARE

At the Royal Alexandra and Albert School we pride ourselves on our exceptional level of pastoral care. Every Sixth Form student is allocated a personal tutor who is their main point of contact throughout their time in the Sixth Form. The Year Leader monitors student progression and facilitates support or intervention whenever this is needed.

There is an open-door policy in Gatton 6, where a member of the Sixth Form team is on hand throughout the working week. For students who require further support, the Sixth Form team has regular one-to-one meetings.

Students' development is supported with bespoke outside lectures on Personal, Social, Health, Economic and Relationship education, as well as information on future pathways and the professional world. Lectures and the provisions on offer are regularly reviewed to accommodate our students' changing needs.

In recent years, we have developed close links with apprenticeship professionals to inform our students of choices in addition to the university route, whilst maintaining all the information required for Russell Group applications.

BOARDING FACILITIES

Boarding is a large part of life at this School. Around 60% of Sixth Form students are full boarders and around 40% are non-boarders. The School has seven boarding houses, with three houses providing Sixth Form accommodation in dedicated annexes. Gatton Hall, the flagship Sixth Form house, is exclusively for the use of Sixth Form students. It is situated in the School's Grade II listed building and consists of spacious shared dorms.

There are various facilities open to boarders and non-boarders at different times during the week and weekend, including all sporting facilities such as the purpose-built fitness suite, swimming pool and dance studio.



In 2023, we opened a brand-new Sixth Form Centre, Gatton 6. This gives our growing Sixth Form more space for personal study and common areas for students to relax and socialise in. Gatton 6 has excellent facilities including common rooms, a breakout room for group work and an IT suite for quiet study. Gatton 6 is accessible from 7.30am until 8pm Monday to Friday.

ENRICHMENT

Life in the RAA Sixth Form is about more than academics; we also focus on students' co-curricular life and the skills they can gain in participating in additional activities. Our co-curricular provision is extensive. There are over 100 clubs and activities on offer every term, with many activities dedicated for Sixth Formers only.

Students are able to volunteer across the School, including in the Junior School, as well as in the Co-Curricular Programme where they can help run and even create clubs of their own. The School's aim is to develop well-rounded students who are academically able but community focused. Involvement in the co-curricular life of the School is also a great way for students to build experiences to add to their university personal statements or CVs.

There is a Boarders Trip Programme with weekly trips to a variety of academic and leisure facilities in and around the area, from the very popular Thorpe Park Fright Night trips to the annual ski trip.

ENGLISH AND MATHS RE-SIT

If you find yourself in a position where you need to re-sit either your English or Maths GCSE, this can be organised through extra sessions on top of your A Level timetable. These will be organised lessons taught by our very able English and Maths departments. Students will also be given extra support on a Saturday if boarding with us.



STUDY SUPPORT

After school we encourage students to stay for a further period to do their prep, revision or complete group work. The access to Sixth Form study facilities enables students who need the framework of quiet, in-school working areas to have additional support for their studies. Weekly lessons with the Year Leader are offered to further support students with study skills.

POST-18 PROVISION (UCAS / APPRENTICESHIPS / PSHE)

Our Designated Head of Destinations leads the Sixth Form in the development of post-18 options. With this in mind, our post-18 programme is twofold:

Firstly, students are guided through their immediate post-18 options. This includes information about, and support for, UCAS and Apprenticeship applications, trips to universities for talks from admissions tutors, as well as guided seminars from industry professionals on the apprenticeship process. This support continues until the submission of the UCAS application or the myriad of apprenticeship applications a student may make.

Secondly, alongside trips, lectures and personal guidance, we support students by introducing them to the world of work and the world beyond formal education. There is information and lectures about the workplace, being a homeowner, managing finances, and how students can look after their emotional and physical wellbeing in a demanding world. All this is delivered by experienced and knowledgeable Year Leaders, a team of outstanding tutors, a network of external industry professionals and former students.

EXTENDED PROJECT QUALIFICATION

All students in Year 12 undertake the Extended Project Qualification, a course designed to develop their research and writing skills in preparation for Degree and Apprenticeship pathways. In recent years, this qualification has carried a 100% pass rate and 95% A*-B, empowering students to be successful in competitive courses as undergraduates.



The course is highly sought after by universities. Students, with support from staff, produce either a Dissertation, Investigation, Artefact or Event. They plan, research and deliver their final product and are marked not just on their outcome but on the whole process. In the past, we have had students complete historical research, literary research, organise big events, and create apps - all with great success.

This qualification makes students stand apart from others in the post-16 landscape, and we are excited to give every student the opportunity to undertake the Extended Project Qualification.

SIXTH FORM DRESS CODE

The Sixth Form dress code is business casual and reflects the modern working environment. This includes smart trousers or skirts and collared shirts or blouses, but ties and blazers are not required for everyday wear (only required for certain occasions).

GAMES AFTERNOON

Students are to wear appropriate sportswear for the sport they are undertaking.



AN INCLUSIVE COMMUNITY

Our Sixth Form community prides itself on being a welcoming, warm, and inclusive environment where students from diverse backgrounds come together to learn and grow. With an international flavour, our community represents a rich tapestry of cultures, languages, and experiences. We celebrate this diversity and believe it enhances the educational experience for all our students. This diverse community prepares our students for a globalised world and helps them develop into well-rounded, empathetic individuals.

Our Year 12 consists of a combination of existing students, who are continuing at the school for A Level studies, and new students who are joining us for the first time. This distribution is almost evenly split, with nearly 50% of the cohort joining the community at Year 12, both as Full Boarders and as Non-Boarders.





SUBJECT	ENTRY CRITERIA	ADDITIONAL NOTES
Sixth Form Entry Criteria - 5 GCSEs at Grade 4-9 including Maths and English. Students who do not secure a Grade 4 In GCSE English and Maths will be able to retake those alongside their chosen Sixth Form courses.		
Accountancy	General Sixth Form Entry Criteria	
Art and Design	Grade 5 in GCSE Art & Design (if studied)	
Biology	Grade 7 in GCSE Biology or 7/7 in Double Award Science and 6 in GCSE Mathematics	
Business Studies	A Merit or grade 5 in GCSE Business Studies (if studied) and 5 in both GCSE English and Mathematics	No requirement to have studied Business previously. Cannot be studied with Economics
Chemistry	Grade 7 in GCSE Chemistry or 7/7 in Double Award Science and 6 in GCSE Mathematics	
Computing	Grade 6 in GCSE Computer Science (if studied) or Grade 6 in GCSE Mathematics.	No requirement to have studied Computing previously
DT - Product Design	Grade 5 in Design and Technology with 5 in GCSE Mathematics	
Economics	Grade 6 in GCSE Mathematics and Grade 5 in English Language or English Literature	No requirement to have studied Economics previously. Cannot be studied with Business
English Literature	Grade 6 in GCSE English Literature and 6 in GCSE English Language	
French	Grade 6 in GCSE French	
Geography	Grade 6 in GCSE Geography	
Health and Social Care AAQ	General Sixth Form Entry Criteria	
History	Grade 6 in GCSE History	



SUBJECT	ENTRY CRITERIA	ADDITIONAL NOTES
Information Technology AAQ	General Sixth Form Entry Criteria	
Mathematics	Grade 7 in GCSE Mathematics	
Mathematics – Further	Grade 8 in GCSE Mathematics	A Level Maths should be studied alongside Further Maths
Media Studies	General Sixth Form Entry Criteria	
Physics	Grade 7 in GCSE Physics or 7/7 in Double Award Science and 7 in GCSE Mathematics	
Psychology	Grade 5 in any GCSE Science	
Sociology	General Sixth Form Entry Criteria	
Spanish	Grade 6 in GCSE Spanish	

International Level 2 qualifications will be matched to UK GCSEs using NARIC. Equivalent grades will be used as entry criteria.

A subject will only be considered viable to run if there are sufficient numbers of students wishing to take the subject.



Accounting is a highly numerate and analytical course for those who enjoy numbers and are comfortable using them. Accounting will develop your ability to solve financial problems logically and evaluate financial data methodically. You will gain experience in financial analysis and making written recommendations based on real-life business scenarios, to meet legal reporting requirements and support business decisions.

ENTRY CRITERIA

General Sixth Form Entry Criteria.

COURSE OVERVIEW

Students complete a range of activities, real-life case studies and scenarios. Units and sections covered in the course include: types of business organisations, accounting concepts, budgeting, the double entry model, marginal costing, standard costing and variance analysis, capital investment appraisal, accounting for limited companies, and the impact of ethical considerations.

Examination: 100%

There are two examination papers, sat at the end of the two years of study, each contributing 50% towards the qualification.

FUTURE PROGRESSION

Students often progress to Accountancy or Financial Management at university and may proceed to study for professional accountancy qualifications whilst working in industry or in accountancy and business advisory roles. Other careers include Audit and Accountancy services, Forensic Accounting, Corporate Finance, Corporate Recovery and Business Consulting services. The study of accounting, therefore, opens up a wide variety of options within Business, Banking, Insurance, Corporate Law, and Business Advisory fields.



This course encourages your creative side and is a great deal of fun! With the creative economy booming this is a fantastic time for you to be involved in the arts. You can work in any artistic media, thereby supporting your individual area of interest. From the start, you are introduced to a broad range of artistic disciplines, including fine art drawing, painting and printmaking, including 3D art and ceramics, textiles and photography. You will work to a brief set by the department but are always encouraged to work independently to build up confidence in your own work and progression.

ENTRY CRITERIA

Grade 5 in GCSE Art and Design (if studied).

COURSE OVERVIEW

Non Examined Assessment (NEA): Identity

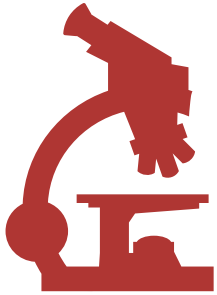
Unit 1: Illustrated Essay/Personal Project

Unit 2: Externally Set Assignment

FUTURE PROGRESSION

Students wishing to study an art related degree are usually expected to complete a Foundation Course on completion of A Level Art.

Art can be used in a range of employment areas: Art Gallery and Museums, Education, Media, Interior Design, Freelance, Artist Advisory roles.



Biology is an exciting science which could allow you to develop the essential skills that any good scientist should have, from planning experiments, making and recording accurate measurements and analysing data. Biology is the natural science concerned with the study of life and living organisms, including their structure, function, growth, origin, evolution, distribution, and taxonomy. You will engage in a variety of learning activities during your study of Biology, including individual practical work, small group exercises, online research and presentation, whole-class teaching and peer assessment.

ENTRY CRITERIA

Grade 7 in GCSE Biology or 7/7 in Double Award Science and Grade 6 in GCSE Mathematics.

COURSE OVERVIEW

Unit 1: Development of practical skills in Biology

Unit 2: Foundations in Biology

Unit 3: Exchange and transport

Unit 4: Biodiversity, evolution and disease

Unit 5: Communication, homeostasis and energy

Unit 6: Genetics, evolution and ecosystems

PRACTICALS (PAGS)

As there is no longer a coursework element, practical skills will be assessed within lessons and the exams. The skills demonstrated within lessons will go towards the practical endorsement certificate which is either a Pass or Fail.

FUTURE PROGRESSION

Possible career options include biochemistry, medicine and nursing, dentistry, genetics, radiography, physiotherapy, nutrition, veterinary science and agriculture to name but a few. Others go on to careers in computing, accounting or teaching. Students who study Biology can also use the essential skills learnt in many other careers such as law and business studies.



This course will develop students' understanding of the range of activities businesses undertake to compete and be successful in the local, national and global economy.

ENTRY CRITERIA

A Merit or Grade 5 Business Studies (if studied) and Grade 5 in both GCSE Mathematics and English. No requirement to have studied Business previously. Cannot be studied with Economics.

COURSE OVERVIEW

The course aims to take a holistic approach to the subject and demonstrate the interrelated nature of business using business models, theories and techniques to support analysis of contemporary business issues and situations. The content is designed to engage students through topics and issues that are relevant in today's society. Students will develop an understanding of:

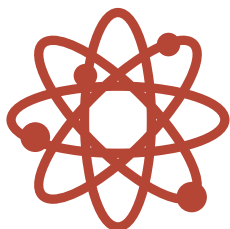
Meeting customer needs | the market | marketing mix and strategy | managing people | entrepreneurs and leaders |

raising finance | financial planning | managing finance | resource management | external influences | business objectives and strategy | business growth | decision-making techniques | influences on business decisions | assessing competitiveness | managing change | globalisation global markets and business expansion | global marketing | global industries and companies (multinational corporations).

Students will be expected to keep up to date with news and business affairs.

FUTURE PROGRESSION

The subject can lead to degrees in Business Management, Finance, Marketing, Leisure Management and careers such as an Accountant, Retail Manager, Civil Servant, Teacher/Lecturer or setting up your own business.



Chemistry A Level builds upon the knowledge gained at GCSE but goes much further. The course allows you to develop a range of skills such as problem-solving, analysis and effective communication. Handling data is a key component of this course and you will build up practical skills as well as secure knowledge relating to Health and Safety. The course requires students to select the most appropriate methods for the investigative activities.

ENTRY CRITERIA

Grade 7 in GCSE Chemistry or 7/7 in Double Award Science and Grade 6 in GCSE Mathematics.

COURSE OVERVIEW

Unit 1: Development of practical skills in Chemistry

Unit 2: Foundations in Chemistry

Unit 3: Periodic Table and energy

Unit 4: Core organic Chemistry

Unit 5: Physical Chemistry and transition elements

Unit 6: Organic Chemistry and analysis

PRACTICALS (PAGS)

As there is no longer a coursework element, practical skills will be assessed within lessons and the exams. The skills you demonstrate within lessons will go towards the practical endorsement certificate which is either a Pass or Fail.

FUTURE PROGRESSION

UK Higher Education institutions currently offer over 200 courses where Chemistry is the primary subject. Some courses can include study in other related areas. Examples include Chemistry with Medicinal Chemistry, Chemistry with Forensic Science and Toxicology, Chemistry with Pharmacology. In addition, a number of other courses either specifically require or find it desirable to have an A Level in Chemistry. These include courses such as Chemical Engineering, Medicine, Veterinary Medicine, Biological Sciences, Environmental Science, Pharmacy and Dentistry.



This course puts computational thinking at its core, helping you to develop the skills to solve problems, design systems and understand human and machine intelligence. It also allows you to apply the academic principles learned in the classroom to real world systems in an exciting and engaging manner. You will develop a comprehensive understanding of computer skills, knowledge of the subject and the impact of technology on society and it will also help with the capacity to think creatively, innovatively, analytically, logically and critically.

ENTRY CRITERIA

Grade 6 in GCSE Computer Science (if studied) or 6 in GCSE Mathematics.
No requirement to have studied Computing previously.

COURSE OVERVIEW

Unit 1: Computing Principles

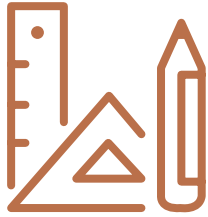
Unit 2: Algorithms and Problem Solving

Unit 3: Computing Systems

Unit 4: Algorithms and Programming

FUTURE PROGRESSION

Computing can be studied at university and there are many other undergraduate and postgraduate courses such as Computer Science, Games Software Development, Information Systems Security, Business Information Systems, Computer Security with Forensics, Business and ICT, Computing Management, Computing, Games Software Development, Software Engineering, Network Management and Design, Information Technology with Business Studies, and Computer and Information Security. Students can also follow a Modern Apprenticeship in the computing industry, or with an employer which has a large computing or information technology function.



The specification has been designed to encourage candidates to take a broad view of design and technology, to develop their capacity to design and make products and to appreciate the complex relations between design, materials, manufacture and marketing. The course has both practical and theoretical elements.

ENTRY CRITERIA

Grade 5 GCSE Design and Technology with Grade 5 GCSE Mathematics.

COURSE OVERVIEW

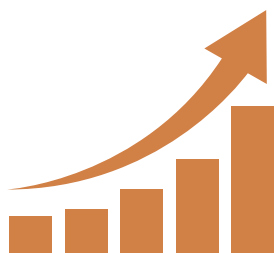
Unit 1: Technical principles

Unit 2: Designing and making principals

Non Examined Assessment (NEA): Including folder of evidence and research combined with practical making task, based on a context and design brief developed by the student.

FUTURE PROGRESSION

Product Design is valued by universities and leads to a range of professions including Architecture, Furniture Designer, Graphic Designer, all aspects of Engineering and Construction plus many more related professions.



This course aims to enable you to develop an interest in, and enthusiasm for, the subject through an appreciation of the contribution that economics makes to the wider economic and social environment. By taking this course you will develop analytical and quantitative skills, together with qualities and attitudes that will equip you for the challenges, opportunities and responsibilities of adult and working life.

ENTRY CRITERIA

Grade 6 in GCSE Mathematics and Grade 5 in English Language or English Literature.
No requirement to have studied Economics previously. Cannot be studied with Business.

COURSE OVERVIEW

Unit 1: Introduction to markets and market failure

Unit 2: The UK economy - focusing on performance and policies

Unit 3: Business behaviour and the labour market

Unit 4: A global perspective

FUTURE PROGRESSION

Degrees can be taken in Economics, Finance, Business Management, Social Policy, History and careers as an Economist, Financial Risk Analyst, Accountant, Actuary, Statistician, Civil Servant.



The power of literature cannot be underestimated and this course explores connections of social and political protest across a range of literary texts, providing abstract thought to aspects of tragedy through the study of prose, poetry and drama. You will be encouraged to respond imaginatively and independently to the written word fostering sophisticated literacy skills, fluency and clarity in discussion and written presentation.

ENTRY CRITERIA

Grade 6 in GCSE English Literature and 6 in GCSE English Language.

COURSE OVERVIEW

Throughout this course, you will develop intellectual creativity and critical appreciation of how writers shape meaning within their texts, while aiming to craft responses to passage-based as well as whole text analytical questions spanning a significant range of the English Literary Heritage.

Unit 1: Literary Genres: Aspects of Tragedy, Drama

Unit 2: Literary Genres: Aspects of Tragedy, Prose and Poetry

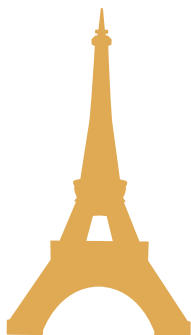
Unit 3: Literary Genres

Unit 4: Texts and Genres

Non Examination Assessment (NEA): Theory and Independence – 2 essays of 1500 words each

FUTURE PROGRESSION

This subject can be used to pursue many different careers and these are some that would apply - Speech and Language Therapy; Education; Academic Research; Forensic Speech Science; Marketing and Communications; Publishing; Broadcast and Journalism; Librarianship; Law; Local Government and Public Office; Finance and Accountancy.



French A Level covers a variety of topics which will deepen your love of the language and your understanding of the French-speaking world. French is a world language, with more than 300 million people speaking French on the five continents. It is a language for the international job market, and the language of culture and of travel. By taking A Level French you will increase your awareness of different cultures and open your mind to the world.

ENTRY CRITERIA

Grade 6 in GCSE French.

COURSE OVERVIEW

- Aspects of French-speaking society: current trends
- Aspects of French-speaking society: current issues
- Artistic culture in the French-speaking world
- Aspects of political life in the French-speaking world
- Grammar
- Study of a book
- Study of a film

FUTURE PROGRESSION

You will be able to pursue your interests in French at university, either as a specialist or in conjunction with another subject. Employment and career opportunities are greatly enhanced for applicants who can demonstrate a higher level of linguistic competence. French is a language that can lead to job opportunities, especially in fields like business, finance, translation, interpretation, publishing, tourism and education.



Geography is a diverse and engaging subject that covers issues relevant to our world today. A range of technologies is used for areas such as fieldwork which can be undertaken on any area of the specification content. Our A Level Geography qualification will develop your understanding of physical and human geography from a local through to a global scale. You will develop practical fieldwork skills as you explore and think critically about the interactions between people and the environment and the issues arising.

ENTRY CRITERIA

Grade 6 in GCSE Geography.

COURSE OVERVIEW

Unit 1: Landscape Systems – Coasts & Earth’s Life Support Systems

Unit 2: Human Interactions – Changing Spaces; making places, Global Migration & Human Rights

Unit 3: Geographical Debates – Hazardous Earth (including synoptic links) and Diseases

Unit 4: Non Examined Assessment (NEA)

FUTURE PROGRESSION

Geography is a fantastic option for many careers or university courses. It is an indicator of an able, well-rounded student who can work with numbers and text; is organised; works well as part of a team, synthesises and argues well. Geography graduates have one of the highest rates of graduate employment, pursuing a wide range of career paths. Geography is also useful for related courses such as Geology, Environmental science, and marine biology.



Are you passionate about helping others and considering a future in the health or social care sector? The Pearson Level 3 Alternative Academic Qualification (AAQ) BTEC National Extended Certificate in Health and Social Care is a dynamic and engaging course designed to introduce students to key aspects of working in the health and social care settings.

ENTRY CRITERIA

General Sixth Form Entry Criteria.

COURSE OVERVIEW

This qualification blends academic learning with real-world relevance, and complements other A-Level subjects such as biology, psychology, sociology and English by enhancing your understanding and reinforcing key concepts across these disciplines — all essential knowledge areas for future health and care professionals. In a time where the demand for skilled, compassionate professionals is on the rise, this course provides the knowledge, skills, and insight needed to thrive in a people-centred profession. It's more than just a qualification — it's an opportunity to shape a future that's not only personally fulfilling but also socially impactful.

YEAR 12

Unit 1: Human Lifespan and Development (external exam unit)

Unit 5: Promoting Health Education (internally assessed coursework unit)

YEAR 13

Unit 3: Principles of Health and Social Care Practice (internally assessed coursework unit)

Unit 2: Human Health and Biology (external exam unit)

FUTURE PROGRESSION

With a strongly contextualised approach, this qualification not only explores various roles within the health and social care sector but also supports progression into higher education and apprenticeships. It serves as a stepping stone into a wide array of professional careers, such as nursing, midwifery, social work, occupational therapy, paramedic science, mental health support, public health and more.



The best reason for taking History at A Level is that the past fascinates you. The study of History involves the discovery and exploration of worlds and minds very different from our own. It will enable you to confront challenging and complex problems and give you the critical thinking and problem solving skills to make sense of these. History also provides us with opportunities to understand the world we live in today; after all, the past is the source of our political, social and ethical ideals.

ENTRY CRITERIA

Grade 6 in GCSE History.

COURSE OVERVIEW

Unit 1: Britain 1930–1997 with a source enquiry of Churchill 1930–1951

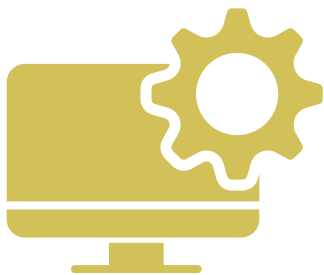
Unit 2: The French Revolution and the rule of Napoleon 1774–1815

Unit 3: Russia and its Rulers, 1855-1964

Non Examined Assessment (NEA): A personal and independent study of the student's choice; 3,000-4,000 word essay.

FUTURE PROGRESSION

History A Level is a sought-after qualification due to the skills that you will develop during your course of study. Universities and employers will know that a student with an A Level in History can: gather and read different kinds of information; read maps, graphs and other diagrams; communicate clearly and argue a point of view through. Such skills are invaluable to a range of careers and fields, such as media, law and advertising. These skills can be useful in business or even accountancy.



The Pearson Level 3 BTEC National in Information Technology (Extended Certificate) is a dynamic qualification that equips students with essential IT knowledge and skills. Developing your understanding the world of Information Technology, exploring the implications of IT systems, tackling cyber-security threats, and mastering the creation of targeted websites and relational databases. With a blend of two examined and two internally assessed units, students will engage in hands-on projects that enhance their IT expertise. This qualification is designed to complement A Levels, linking seamlessly with subjects like Mathematics and Business Studies, Psychology and Art and Design, paving the way for higher education and future career opportunities.

ENTRY CRITERIA

General Sixth Form Entry Criteria.

COURSE OVERVIEW

The course contains the following modules:

Module 1: Information Technology Systems (Exam based)

Module 2: Cyber Security and Incident Management (Exam based)

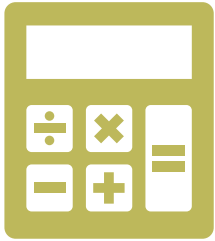
Module 3: Website Development (Course work)

Module 4: Relational Database Development (Course work)

FUTURE PROGRESSION

This qualification can lead to progression to the following degrees:

- BA Business Studies
 - BSc Information Systems
 - BSc Computer Science
- or to workplace Apprenticeships in:**
- Cybersecurity Analyst
 - Data Analyst
 - Web Developer
 - Database Administrator
 - IT Support Specialist
 - Cloud Engineer
 - Artificial Intelligence/Machine Learning Engineer
 - Software Developer
 - Systems Analyst
 - Network Administrator



Mathematics at A Level is so much more than numbers. This subject offers a number of transferable skills including logical skills, problem solving and analysis.

ENTRY CRITERIA

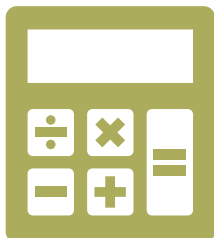
Grade 7 in GCSE Mathematics.

COURSE OVERVIEW

Mathematics A Level comprises several different modules, both pure and applied, including mechanics and statistics. Topics such as geometry, calculus, trigonometry and algebra are covered in the Core modules and form part of the fundamental mathematical toolkit required for this course. Abstract reasoning, logic in problem solving and the ability to perform algebraic manipulation are key skills required for studying this subject.

FUTURE PROGRESSION

Degrees in Mathematics, Statistics, Applied Mathematics, Computing, Engineering, Actuarial Mathematics, Business Mathematics, Industrial Mathematics, Finance or Mathematics Education can be followed. Career paths to follow are varied and can include Accountant, IT Consultant, Teacher, Engineer, Quantitative Analyst, Actuary, Financial Consultant, Statistician, Quantity Surveyor.



Do you love Maths? Do you want to do more Maths? The mathematics studied in this subject is beyond that required for the standard A Level Mathematics course.

ENTRY CRITERIA

Grade 8 in GCSE Mathematics. A Level Mathematics should also be studied alongside Further Mathematics.

COURSE OVERVIEW

New topics are introduced such as Complex Numbers, Matrices, Co-ordinate Systems, Polar Co-ordinates and Hyperbolic Functions. Topics already met in the single A Level Mathematics course (such as Calculus and its applications, Vectors and Proof) are further extended.

Unit 1: Core Pure Mathematics 1

Unit 2: Core Pure Mathematics 2

Unit 3: Decision Mathematics 1

Unit 4: Further Mechanics 1

FUTURE PROGRESSION

Degrees in Mathematics, Statistics, Applied Mathematics, Computing, Engineering, Actuarial Mathematics, Business Mathematics, Industrial Mathematics, Finance or Mathematics Education can be followed. Career paths to follow are varied and can include Accountant, IT Consultant, Teacher, Engineer, Quantitative Analyst, Actuary, Financial Consultant, Statistician, Quantity Surveyor.



The media shapes our lives in many different ways. Developing a strong understanding of the techniques media industries use to influence audiences is an essential life skill in our modern and diverse world. The media industry is universal, fast-moving and interactive, making Media Studies a relevant and engaging subject for all young people to study.

ENTRY CRITERIA

General Sixth Form Entry Criteria.

COURSE OVERVIEW

In the Media Studies course, students will study nine media forms and associated set products using a theoretical framework covering media language, media representations, media industries and media audiences. They also consider the social, cultural, economic, political and historical contexts of media products.

Component 01: Media Messages

Component 02: Evolving Media

Component 03/04: Creating Media

ASSESSMENT

Media Messages: 2-hour exam – 35%

Evolving Media: 2-hour exam – 35%

Making Media: 30%

FUTURE PROGRESSION

An A Level in Media Studies opens doors to a range of exciting post-18 options and careers in an array of creative industries, including: television; advertising and marketing; film; gaming; online, social and participatory media. Students who study Media Studies at A Level often go on to university degree courses such as Media Studies, Film Studies, Animation, Photography, Marketing and other arts related subjects. Students may also go on to apply to film schools or pursue apprenticeships in the media industry.



It began with Physics. Physics encompasses the study of the universe from the largest galaxies to the smallest subatomic particles. Physics - the study of matter, energy and their interactions - is an international enterprise, which plays a key role in the future progress of humankind. This course will provide a firm foundation in Physics knowledge and understanding, together with mathematical competence. You will be introduced to a wide range of Physics principles and will be led to an understanding of how nature operates at both microscopic and macroscopic scales.

ENTRY CRITERIA

Grade 7 in GCSE Physics or 7/7 in Double Award Science and Grade 7 in GCSE Mathematics.

COURSE OVERVIEW

Unit 1: Measurements and their errors

Unit 2: Particles and radiation

Unit 3: Waves

Unit 4: Mechanics and materials

Unit 5: Electricity

Unit 6: Further mechanics and thermal physics

Unit 7: Fields and their consequences

Unit 8: Nuclear physics

Unit 9: Medical physics

Unit 10: Practical skills will be assessed within lessons and the exams. The skills demonstrated within lessons will go towards the practical endorsement certificate which is either a Pass or Fail.

FUTURE PROGRESSION

Physicists are in short supply nationally and command a premium on earnings. Physicists go on to study a variety of different degrees from the general Physics degrees through to more specialised degrees in Aeronautical Engineering, Laser Physics and Nuclear Physics. Graduates in Physics tend to be extremely well qualified for further research and a scientific career, depending on the level to which they have specialised in their undergraduate degree.



Psychology A Level is a fascinating subject which looks to answer the big question 'Why do people behave in the way they do?' The mind is a heady cocktail of enzymes, neurons, neurotransmitters, thoughts and signals which dictate how and why we feel, think and behave; but why are we all different? Why are some people more prone to stress than others? Why do most people fear snakes that others love and collect? How can a normal person in WW2 commit atrocities just because they were following orders? Psychology looks at questions like these with the use of scientific control and experimentation to try and produce valid answers to some of society's most pertinent questions.

ENTRY CRITERIA

Grade 5 in any GCSE Science.

COURSE OVERVIEW

Unit 1: Social Approach: the influence of individuals, groups and society on behaviour

Unit 2: Cognitive Approach: the nature of memory and issues such as dementia

Unit 3: Biological Approach: how the CNS, brain and hormones influences behaviour focused on aggression

Unit 4: Learning Approach: how we learn through stimulus-response and from role models

Unit 5: Clinical Psychology: the diagnosis, symptoms and treatments of mental disorders

Unit 6: Criminal Psychology: influences on people who commit crime and treatments to prevent recidivism

Unit 7: Perspectives in Psychology: a synoptic topic discussing the many influences on human behaviour

Within each topic, students will learn about different research methods within psychology.

FUTURE PROGRESSION

Psychology can help towards careers both directly and indirectly. Many graduates go directly into psychological professions such as clinical, criminal, education or occupational psychology. They may also use their psychological knowledge in careers such as law, human resources, acting and marketing.



Sociology is the study of society and how people behave in social groups. If you enjoy people-watching and asking the question why, then this is the ideal subject. A Level Sociology offers you the opportunity to develop the essential knowledge and understanding of central aspects of sociological thought.

ENTRY CRITERIA

General Sixth Form Entry Criteria.

COURSE OVERVIEW

Unit 1: Family and Households

Unit 2: Education; Sociological Methods

Unit 3: Beliefs in Society

Unit 4: Crime and Deviance; Theory and Methods

FUTURE PROGRESSION

An A Level in Sociology will allow you to develop and display the skills of essay writing including analysis, interpretation, evaluation, as well as the ability to construct a logical argument supported with a range of evidence.

Therefore, Sociology can gain you a place at prestigious universities such as those belonging to the Russell Group. An A Level in Sociology can assist entry to a range of humanity and social science courses or indeed any other degree course.



Spanish A Level covers a variety of topics which enhance the love of the language and your understanding of the Spanish-speaking world. Spanish is an official language of 21 countries across three continents. With almost 500 million speakers, it is the second most spoken language by number of native speakers in the world, By taking A-Level Spanish, you will increase your awareness of different cultures and open your mind to the world.

ENTRY CRITERIA

Grade 6 in GCSE Spanish.

COURSE OVERVIEW

- Aspects of Hispanic society
- Artistic culture in the Hispanic world
- Multiculturalism in Hispanic society
- Aspects of political life in Hispanic society
- Grammar
- Study of a book
- Study of a novel

FUTURE PROGRESSION

You will be able to pursue your interests in Spanish at university, either as specialists or in conjunction with another subject. Employment and career opportunities are greatly enhanced for applicants who can demonstrate a higher level of linguistic competence. With the knowledge of an additional language, you can pursue a wide range of careers in Law, Finance and Business, Travel and Tourism, Translator and Interpreter and Teaching.

Royal Alexandra & Albert School
Gatton Park
Reigate
Surrey
RH2 0TD
01737 649001
admissions@gatton-park.org.uk
www.raa-school.co.uk

Patron: Her Royal Highness The Duchess of Gloucester
Founded: 1758
Registered charity No. 311945

ROYAL
ALEXANDRA
& ALBERT
SCHOOL

