

Royal Alexandra & Albert School



Health & Safety Policy

The Governors, Foundation and staff at The Royal Alexandra and Albert School are committed to providing a safe and happy learning environment, promoting equality and diversity and ensuring the well-being of all members of the community. It is their clear intention to promote good behaviour and to exercise their responsibilities in ensuring the safeguarding and welfare of all pupils and staff within the community.

Policy applies to	School and Foundation
Committee responsible	Health & Safety committee
Governing Body approval required	Yes
Board of Management approval required	Yes
Accountable executive	Bursar / Head of Health & Safety
Status & Review cycle	Statutory, annual
Last approval	September 2023

Table of Contents

Overview	6
Amendment Record	7
1.0 Health and Safety Policy Statement	9
2.0 Organisation for Health and Safety	11
Roles and Responsibilities	12
The charitable Foundation and School Governing Body	12
Headteacher for Royal Albert and Alexandra School	12
Bursar & Foundati	12
Estates Bursar	13
Operation & Resources Director	13
Head of Health & Safety	14
Heads of Departments, Heads of Houses and Line Managers	14
Catering Manager and Domestic Services Manager	15
Health Centre Manager	16
Nominated First Aider	16
Transport Coordinator	16
Teaching Staff	17
All Employees	17
Students	18
Contractors	19
Visitors	19
Health and Safety Committee	20
3.0 Arrangements	21
3.1 Accident, Incident, Near Miss, and Occupational Disease Reporting and Investigation	21
Accidents	21
Incidents	21
Near Misses	21
Reporting and Recording	21
First Aid/Medical Assistance	22
Investigations	22
Occupational Disease	22

The Reporting of Injuries, Diseases and Dangerous Occurrences Regulations (RIDDOR) 2013	22
Untitled	22
Record Keeping	23
Monitoring	23
3.2 Asbestos	24
Asbestos Surveys	24
Asbestos Management Plan	24
Training	24
Information	24
3.3 Boarding	25
3.4 Building Maintenance and Alterations	25
3.5 Children and Young Persons	26
3.6 Competence and Training	27
3.7 Consultation with Employees	28
3.8 Control of Contractors	28
Contractor Induction	29
Permits to Work	30
Monitoring	30
Contractor Review	31
3.9 Control of Substances Hazardous to Health (COSHH) - Inc. Radiation Introduction	31
Summary of Actions	31
Legal Framework	32
Substances Hazardous to Health	32
Risk Assessments	33
Science & DT	33
Art	33
Controls	34
Maintenance, Examination and Testing	34
Responsible Persons	35
3.10 Disabled and Temporarily Disabled	35
3.11 Display Screen Equipment (DSE)	36
3.12 Driving for Work	37
Driver Competence	37

3.13 Drugs and Alcohol	37
3.14 Educational Visits	38
3.15 Electricit	39
3.16 Emergency Procedures	40
3.17 Equestrian Centre	40
3.18 Fire Safety	40
Responsibilities	40
Fire Safety Assistance	40
Fire Safety Risk Assessment	40
Fire Prevention	41
Fire Alarm and Detection System	41
Emergency Lighti	41
Signage	41
Escape Routes and Exits	42
Fire Extinguishers	42
Disabled Persons and Others Requiring Assistance	42
Fire Drills	42
Training for all Staff/Volunteers	42
Training for Fire Wardens	42
Cooperation and Coordination	43
3.19 First Aid	43
3.20 Gas Safety	44
Maintenance of Gas Equipment	44
Summary of Key Actions	44
Gas Emergencies	44
3.21 Glass & Glazing Safety	45
3.22 Health and Safety Committee – Terms of Reference	45
3.23 Legionella	45
Specific Responsibilities	45
Water Safety Manual / Risk Assessment	45
Physical Preventative Measures	46
Control Measures	46
Internal Control Measures	46

Taps	46
Showers	47
Toilets	47
Cold Water Tanks	47
Calorifiers/ Hot Water Tanks	47
Drains	47
Hot Water Systems	47
Cold Water Systems	47
External Control Services	47
Heating plant, Air Conditioning and Condensers	48
Water Sampling	48
Records	48
Staff Training	48
3.24 Lifting Equipment and Lifting Operations	48
3.25 Lone Working	49
3.26 Manual Handling	50
Risk Assessment	50
Training and Supervision	50
Injuries	50
Persons at Increased Risk	51
3.27 Medication	51
3.28 New and Expectant Mothers	51
3.29 Noise	52
3.30 Personal Protective Equipment (PPE)	52
3.31 Pressure Systems	53
3.32 Risk Assessment	54
3.33 Security	54
3.34 Slips, Trips and Falls	55
3.35 Smoking	56
3.36 Stress	57
3.37 Swimming Pool	57
3.38 Tree Safety	57
School Buildings	58

Wider Parkland	58
Road corridors	58
3.39 Vehicles on Site	58
Workplace Road Conditions	59
3.40 Vibration	59
3.41 Violence at Work	59
3.42 Waste Management and Disposal	60
3.43 Welfare Facilities	61
Maintenance of Workplace, Equipment, Devices and Systems	61
Ventilation	61
Temperature in Indoor Places	61
Lighting	61
Cleanliness, Floors, Traffic Routes and Waste Materials	61
Windows, and Transparent or Translucent Doors, Gates and Walls	62
Windows, Skylights and Ventilators	62
Doors and Gates	62
Sanitary Conveniences	62
Drinking	63
Staff Facilities for Rest and to Eat Meals	63
Filing and storage	63
3.44 Work at Height	63
Risk Assessment for Work at Height	64
Equipment identification / inspection	64
Using Ladders (including stepladders) Ladders should:	64
3.45 Work Equipment	64
Suitable for Intended Use	65
Safe for Use	65
Used only by people who have received adequate information, instruction and training	65
Accompanied by suitable safety measures e.g. markings and warnings	65
Protection against Specific Hazards	66
Inspection Requirements	66
Types of Inspection	67
Legal Requirements for Thorough Examinations / Inspections	67

Hire of Work Equipment

68

Overview

The Royal Alexandra and Albert School “The School” is a co-educational, non-selective state boarding school for children aged 7-18. The education services are provided by Surrey County Council and overseen by a Board of Governors. The Royal Alexandra and Albert Foundation “The charitable Foundation” owns the Estates and delegates responsibility for the day to day management of the Boarding Houses to the Governing Body. The Foundation is run by the Board of Trustees.

The School and Foundation are located in a landscaped country estate consisting of 260 acres of parkland in Gatton Park, near Reigate, Surrey. The school is a state-maintained school of just over 1000 pupils. Of these, approx. 400 are full boarders and approximately another 600 are ‘flexi-boarders’ who spend extended days in the residential provision. In addition to educational buildings there are 9 boarding houses, extensive playing fields, a Health Centre, swimming pool, stables and 73 staff houses and flats.

The Gatton Trust is a subsidiary of The Foundation, an independent charity committed to conserving Gatton Park for education and public enjoyment. The Gatton Trust promotes the restoration, conservation, protection and improvement of

the physical and natural environment. It also facilitates the study of natural history, geography, history and environmental education.

Certain services are subcontracted, the most significant of which are Harrisons Catering Services Ltd ``Harrisons`` and KM Cleaning and Maintenance Services ``KM Cleaning``. Harrisons provides catering services for the school and for events associated with The School, The Foundation and The Gatton Trust. KM Cleaning provides cleaning services in The School, Boarding Houses and throughout the Estate.

This Health and Safety Policy covers both The Gatton Trust, the charitable Foundation and Royal Alexandra and Albert School. It is divided into three sections as follows:

1. Health and Safety Policy Statement

This section sets out the general aims and objectives of the Health and Safety Policy and is signed off by the Board of Management, Chair of Governors and the Headteacher.

2. Organisation for Health and Safety

This section provides information on the health and safety management system and organisational arrangements in place for implementing the aims and objectives of the Health and Safety Policy, including specific roles and responsibilities.

3. Arrangements for Health and Safety

This section details the specific procedures to be adopted by staff, pupils, visitors and contractors in order to ensure that the aims and objectives outlined in section 1 are put into practice. These arrangements are supplemented by a number of co-existing school policies which relate to health and safety management of particular school activities, facilities, staff, pupils and visitors. Please note that where other related policies exist, these are clearly signposted from the 'Arrangements' section.

Amendment Record

Any amendments made to this Health and Safety Policy will be recorded in the table below and communicated to staff accordingly. Staff will be consulted on any significant changes to this Health and Safety Policy via the Health and Safety Committee.

Revision No.	Date	Section No.	Section Title	Details of Amendment(s) Made	Amendment(s) Made By
Version 1	Previously reviewed November 2011	N/A	N/A	Reviewed November 2011 by Trustees/Governors	Owen David/Trustees
Version 2	February 2021	ALL	ALL	Complete rewrite in Draft.	Hettle Andrews and Associates

Version 3	January 2023	ALL	ALL	Review of complete rewrite of unpublished Version (2021)	Louise Runge – Head of Health & Safety

1.0 Health and Safety Policy Statement

The Governors and Trustees of Royal Alexandra and Albert School, the charitable Foundation and Gatton Trust recognise that it has a legal duty under the Health and Safety at Work etc. Act 1974 and subordinate regulations to ensure the health, safety and welfare of employees, pupils and any others who may be affected by the school's activities.

Royal Alexandra and Albert School, the charitable Foundation and Gatton Trust (to be referred to herein as the organisation), aims to achieve a safe, healthy and supportive working and learning environment for all employees, pupils and others affected by the school's activities. The organisation regards achieving this aim to be a mutual objective for management and employees at all levels and considers it to be a management responsibility equal to that of any other function.


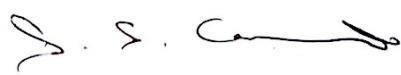
We undertake to discharge our statutory duties by:


- Complying with all relevant acts, regulations, and Approved Codes of Practice (ACoPs);
- Providing an organisational structure for health and safety with clearly defined roles and responsibilities;
- Maintaining our premises and providing a safe environment;
- Providing adequate welfare facilities;
- Providing and maintaining safe and suitable work equipment;
- Identifying hazards relating to school premises and activities, assessing risks related to them, and implementing appropriate preventative measures which shall eliminate or reduce risks to the lowest extent as is reasonably practicable;
- Ensuring that risk assessments are regularly reviewed;
- Encouraging staff, pupils and others to report all accidents, incidents, near misses, occupational diseases and hazards;
- Ensuring that all accidents, incidents, near misses and incidences of occupational disease are recorded and investigated, and that any remedial actions required to minimise the risk of recurrence are implemented;
- Ensuring that appropriate and adequate emergency procedures are in place;
- Communicating and consulting with employees on matters affecting their health and safety;
- Recruiting and appointing personnel who have the ability, skills and competence commensurate with their role and level of responsibility;
- Ensuring tasks given to employees and pupils are within their skills, knowledge and ability to perform;
- Providing adequate training (and where appropriate, refresher training) to ensure that all employees are competent to perform their roles and responsibilities;
- Providing employees with appropriate information, instruction and supervision to safely carry out their role;
- Promoting awareness of health and safety and of good practice through the effective communication of relevant information;
- Regularly monitor health and safety performance through active and reactive monitoring, and revise policies, procedures and risk assessments where appropriate, to ensure a cycle of continuous improvement;
- Ensuring that contractors are adequately vetted to ensure that they pay due regard to health, safety and welfare matters;
- Providing sufficient resources, competent technical advice and funds as needed to meet these objectives; and
- Bringing this policy statement to the attention of all employees.

All employees will actively contribute to this policy by accepting their responsibilities for the provision and maintenance of safe, healthy working practices, equipment, premises, systems of work and the working environment. All persons are reminded that it is a criminal offence to misuse or interfere with anything which is provided in the interests of health, safety and welfare.

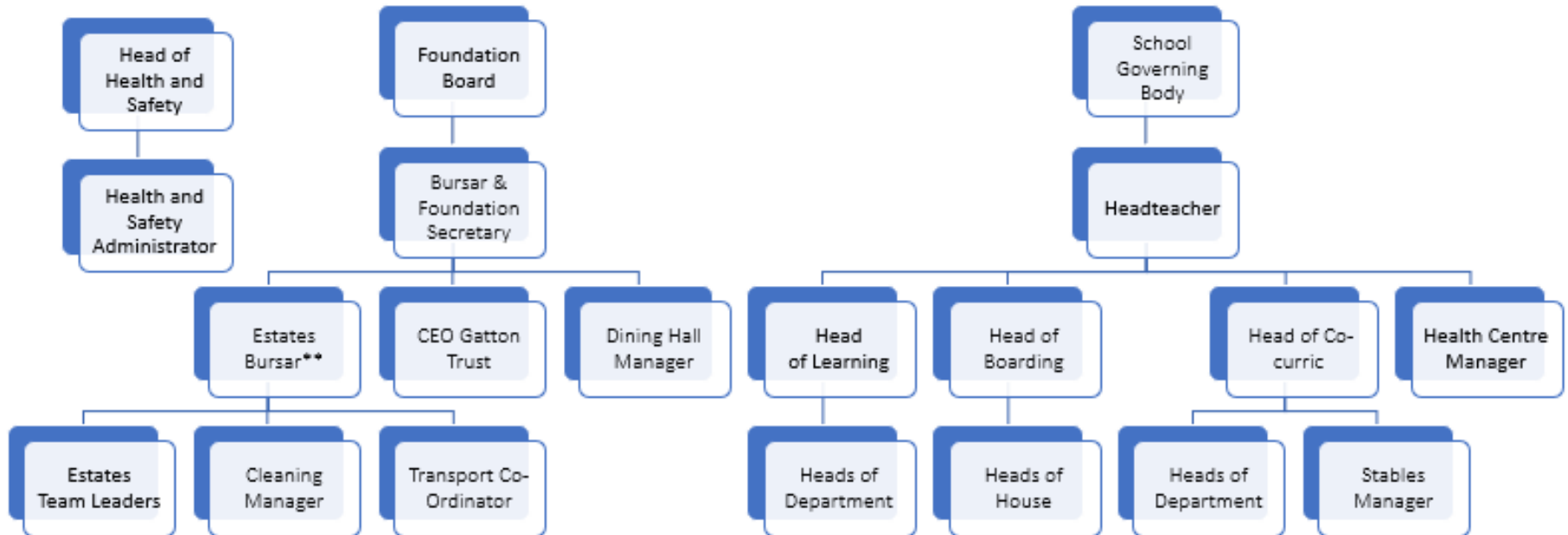
The organisation stresses its commitment to Health and Safety, to the extent that where wilful disregard for safe working practices by any employee seriously puts at risk the health and safety of themselves or any other person, then this shall be considered a gross misconduct and may lead to disciplinary action.

The Health and Safety Policy will be monitored and reviewed annually or as necessary, to comply with new legislation, regulations, codes of practice, or best practice procedures. All alterations, or changes to the Health and Safety Policy, will be brought to the attention of all employees.

Name:	Morgan Thomas	Name:	David Clamp
Position:	Headteacher	Position:	Chair of Governors
Dated:	September 2023	Dated:	29.09.23
Signed:		Signed:	

Name:	David Frank
Position:	Chair of the Board of Management
Dated:	30.09.23
Signed:	

2.0 Organisation for Health and Safety



Please note: For the purpose of this Health & Safety sits in an advisory capacity

Roles and Responsibilities

In addition to the responsibilities set out below for all Employees, Trustees and Governors, all staff are responsible for ensuring that:

- They set a good personal example for health and safety;
- They display a positive attitude towards safe systems of work and accident prevention is promoted across the organisations;
- They are sufficiently trained and qualified for the roles they carry out.

The charitable Foundation and School Governing Body

The organisation will adopt the guidance provided in INDG417 (rev1) "Leading Health and Safety at Work: Actions for Directors, Board Members, Business Owners and Organisations of All Sizes" (HSE, 2013) to ensure that:

- There is strong and active leadership from the top, with visible, active commitment from the Boards;
- There are effective 'downward' communication systems and management structures in place;
- There is an integration of good health and safety management with business decisions;
- The workforce is engaged in the promotion and achievement of safe and healthy conditions;
- There is effective 'upward' communication in place;
- The school has access to competent health and safety advice;
- The school has a Health and Safety Policy in which management responsibility for health and safety is clearly defined;
- The appropriate organisational arrangements relating to the management of health and safety exist and are monitored and reviewed (including the identification and management of health and safety risks); and
- Sufficient resources are allocated within the school budget to allow for the effective implementation of the Health and Safety Policy and all related procedures. This shall include the provision of adequate funds for equipment, facilities, training, support and monitoring the effectiveness of the policy.

Headteacher for Royal Albert and Alexandra School

The Headteacher has overall responsibility for health and safety within the school and will ensure that the school is fully compliant with relevant legislation and that the Health and Safety Policy is implemented and disseminated. The Headteacher, through the senior management structure and liaison with Foundation staff, will ensure that safe working and learning conditions are implemented and maintained across all aspects of school provision.

Bursar & Foundation Secretary

In addition to those responsibilities set out for all employees, the Bursar is responsible for:

- Liaising with an external, professional consultant regarding health and safety matters as required to ensure that, so far as is reasonably practicable, The Trust/School discharges its duty under the Health and Safety at Work etc. Act 1974;
- Ensuring that sufficient resources are allocated within the school budget to allow for the effective implementation of the Health and Safety Policy and all related procedures. This shall include the provision of adequate funds for equipment, facilities, training, support and monitoring the effectiveness of the policy.
- Ensuring that arrangements are in place to coordinate day to day health and safety arrangements within the school and maintaining health and safety documentation;

- Ensuring that arrangements are in place to bring health and safety documentation to the attention of all staff;
- Ensure that there is a process in place for reporting accidents, incidents, and incidences of confirmed occupational disease under the Reporting of Injuries, Diseases and Dangerous Occurrences Regulations, 2013;
- Ensure that there is a process in place for the reporting of any serious accidents, incidents, or near misses to a member of the Senior Management Team (SMT) as soon as possible;
- Coordinate in-house safety representatives and identifying specific safety responsibilities of employees as required;
- Ensure that the training needs of employees to undertake their health and safety responsibilities, are met;
- Ensure that there is a process for relevant staff to undertake risk and COSHH assessments to identify measures to reduce risks associated with school activities. Liaising with external professionals for support with this as required.
- Ensure that sufficient training is provided to undertake these duties.
- Ensuring that they set a good personal example for health and safety
- Reprimand any member of Gatton Trust and the charitable Foundation failing to discharge satisfactorily their responsibilities for health and safety; and
- Alongside the Headteacher, reprimand any member of School failing to discharge satisfactorily their responsibilities for health and safety; and
- Ensuring that a positive attitude towards safe systems of work and accident prevention is promoted within School.

Estates Bursar

In addition to those responsibilities set out for all employees and Heads of Department/Managers, the Estates Bursar is responsible for:

- Ensuring that sufficient resources are allocated within the Foundation budget to allow for the effective implementation of the Health and Safety Policy and all related procedures. This shall include the provision of adequate funds for equipment, facilities, training, support and monitoring the effectiveness of the policy.
- Ensuring that all school buildings and grounds are maintained in a safe condition;
- Ensuring that the organisations electrical installations, gas appliances, pressure systems/vessels, lifting equipment, fire detection and alarm systems, and emergency lighting systems are inspected and maintained in line with statutory requirements;
- Appointing or delegate the appointment and supervision of the work of contractors in line with the Construction (Design and Management) Regulations 2015 (CDM);
- Ensuring that the Estates Team Leaders and the Estates Team are given the support, training and guidance to competently and safely carry out the roles assigned to them;
- Ensuring that consideration is given to minimise risk and ensure robust health and safety systems in longer term strategic estate planning and rolling maintenance programs;
- Maintaining a reactive maintenance system (via the online maintenance task reporting system) for defects within the school buildings or on school grounds and prioritising any hazardous defects for early action.

Operation & Resources Director

In addition to those responsibilities set out for all employees and Heads of Department/Managers, the Operations and Resources Director is responsible for:

- Liaise with the Head of H&S to ensure effective health and safety provision for the school
- Manage the operational health and safety functions, e.g. fire evacuation, critical incident management and business continuity for the school.

Head of Health & Safety

In addition to those responsibilities set out for all employees and Heads of Department/Managers, the Head of Health & Safety is responsible for:

- Reviewing, maintaining and communicating the Health and Safety Policy to ensure its requirements are well implemented and managed across the organisation
- Ensuring that arrangements are in place to bring health and safety documentation to the attention of all staff;
- Coordinating day to day health and safety arrangements within the school and maintaining other health and safety documentation;
- Reporting accidents, incidents, and incidences of confirmed occupational disease under the Reporting of Injuries, Diseases and Dangerous Occurrences Regulations, 2013;
- Reporting any serious accidents, incidents, or near misses to a member of the Senior Leadership Team as soon as possible;
- Acting as the responsible person with day-to-day responsibility for the safe management of fire, asbestos, and legionella
- Coordinate relevant staff to undertake risk and COSHH assessments to identify measures to reduce risks associated with school activities. Liaising with external professionals for support with this as required.
- Ensuring that the appropriate organisational arrangements relating to the management of health and safety exist and are monitored and reviewed (including the identification and management of health and safety risks); and
- Any concerns raised relating to Health & Safety are appropriately addressed and communicated to all relevant staff
- Alongside the Estates Bursar, coordinate and monitor the contract management and health & safety requirements for projects undertaken on site
- Ensure that staff receive appropriate Health & Safety training to safely carry out their roles and meet statutory requirements, new staff health & safety induction.

Heads of Departments, Heads of Houses and Line Managers

Heads of Departments, Heads of Houses and Line Managers need to act as Health and Safety Managers for their area of responsibility and the staff that they manage, and actively lead the implementation of this Health and Safety Policy.

In addition to those responsibilities set out for all employees, Heads of Departments, Heads of Houses and Line Managers are responsible for:

- Ensuring that all of their staff are aware of and fully understand their responsibilities as outlined in this Health and Safety Policy;
- Ensuring that new staff are provided with a suitable health and safety induction;
- Ensuring that all pupils within their area receive suitable health and safety inductions;
- Ensuring that any accidents, incidents, near misses and/or incidences of confirmed occupational disease are reported via the inhouse system to the Head of Health & Safety and where relevant the Headteacher;

- Encouraging staff to report all accidents, incidents, near misses, occupational disease and/or hazards;
- Ensuring that risk assessments are carried out and recorded for all relevant areas, activities, events and outings/educational visits within their area of responsibility; and that these are reviewed annually, following any significant changes, and/or following any accidents, incidents or near misses;
- Ensuring that a COSHH register is in place listing any hazardous substances used/stored within their area, and that COSHH assessments have been completed and recorded;
- Ensuring that any hazardous substances are correctly used, stored, and labelled;
- Ensuring that staff (and where relevant, pupils) are briefed on the key content of risk and COSHH assessments;
- Bringing to the attention of the Head of Health & Safety and where appropriate the Headteacher or Senior Leadership Team, any high-risk activity which cannot be adequately controlled by use of existing departmental resources;
- Ensuring that safe systems of work exist in line with recognised procedures;
- Ensuring that staff and pupils are provided with adequate information, instruction, supervision, and training in safe working procedures. In particular ensuring that there are adequate levels of supervision in place for pupils – especially for practical activities and educational visits;
- Ensuring that all plant, machinery and equipment is in good and safe working order, maintained as appropriate, adequately guarded and that all reasonable steps are taken to prevent unauthorised or improper use;
- Ensuring that appropriate personal protective equipment and clothing is available and used (where necessary), and that staff and pupils are instructed in its use;
- Setting health and safety objectives and standards for their area;
- Ensuring that health and safety is a rolling agenda item for team meetings;
- Ensuring that all health & safety checks within their areas of responsibility are undertaken and completed
- Ensuring that any health and safety issues that they are unable to remedy are reported to the Head of Health & Safety for action;
- Ensuring that their staff attend/complete mandatory health and safety training in line with school requirements;
- Identifying any specialist health and safety training that may be required for themselves and/or their staff to ensure that they are competent to perform their work in a safe manner;
- Ensuring that staff co-operate with all emergency procedures including fire & lockdown drills;
- Reprimanding any member of the School failing to discharge satisfactorily their responsibilities for health and safety;

Catering Manager and Domestic Services Manager

In addition to those responsibilities set out for all employees and Heads of Department, Heads of Houses and Line Managers, the Catering Manager and Domestic Services Manager are responsible for:

- Ensuring that this policy and all associated procedures are communicated to contracted staff and their respective managers;
- Ensuring that staff co-operate with all emergency procedures including fire & lockdown drills;
- Ensuring that, so far as is reasonably practicable, The Trust/School discharges its duties under the Food Hygiene (England) Regulations 2006;
- Identifying training needs of cleaning and catering employees to undertake their health and safety and food safety responsibilities, as required; and
- Undertaking sufficient training as is required to perform these duties.

Health Centre Manager

In addition to those responsibilities set out for all employees, the Health Centre Manager is responsible for:

- Maintain and review any Health & Safety documentation or policies relating to the health management of our students and the provision of first aid, medication and care.
- Ensuring that all pupils receive adequate medical care whilst on site, including out of hours cover
- Maintaining the medical facilities and reporting any defects to the Estates Team or other relevant individual
- Maintaining the arrangements for administration of medicines and all associated practices for the handling and storage of medication including controlled drugs
- Support the appointed First Aider in the provision of arrangements for adequate first aid provision and first aid training (see policy on First Aid, accident, incident or sickness), including keeping records of all training and ensuring these are up to date and appropriate;
- Ensuring that employees are informed, in writing, of the arrangements concerning First Aid, including the location of the equipment, facilities and first aid personnel;
- Informing the Senior Leadership team and when appropriate the parents, of any serious accident to children, completing the documentation and reporting internally to relevant parties;

Nominated First Aider

In addition to those responsibilities set out for all employees, the nominated First Aider is responsible for:

- Ensuring that all pupils receive adequate first aid whilst on site, including out of hours cover
- Maintaining arrangements for adequate first aid provision and first aid training (see policy on First Aid, accident, incident or sickness), including keeping records of all training and ensuring these are up to date and appropriate;
- Ensuring that employees are informed, in writing, of the arrangements concerning First Aid, including the location of the equipment, facilities and first aid personnel;
- Informing the Senior Leadership team and when appropriate the parents, of any serious accident to children, completing the documentation and reporting internally to relevant parties;

Transport Coordinator

In addition to those responsibilities set out for all employees, the Transport Coordinator is responsible for:

- Ensure all vehicles are safe to use and conduct necessary weekly checks which are recorded
- Ensure that all drivers of vehicles belonging to the organisation are adequately trained and have read and signed the Minibus Handbook and other guidance provided
- Keeps the Drivers Register up to date
- Annually check all staff to ensure that there have been no changes to their licences which may affect them being able to drive
- Ensure staff conduct pre-checks before use
- Ensure that each vehicle is equipped with a first aid kit, hi vis jacket and emergency triangle
- Ensure all vehicles not safe to use are taken out of use until repaired
- Ensure all Transport/Driving risk assessments are conducted and kept up to date.
- Report any accidents to the Estates Bursar/Insurer

Teaching Staff

The health and safety of pupils is the responsibility of the person teaching them whilst they are in the learning environment. It is imperative that teaching staff set an example with regards to health and safety, and that they demonstrate best practice at all times.

In addition to the responsibilities of all employees (as detailed above), teaching staff are also responsible for:

- Ensuring that their pupils are adequately supervised;
- Ensuring that all pupils receive a suitable health and safety induction (as outlined in section 2.25 of this Policy);
- Encouraging their pupils to report all accidents, incidents, near misses, illness and/or hazards to a member of staff;
- Ensuring that safe teaching practices are developed and implemented in line with relevant safety documents (e.g. HSE, CLEAPSS, DfES guides etc.);
- Ensuring that pupils are informed of health and safety regulations, rules and procedures and that pupils and other staff in their area of work apply these effectively;
- Briefing pupils on the key points of all relevant risk/COSHH assessments prior to the start of practical sessions;
- Ensuring that pupils are wearing appropriate personal protective equipment (PPE), where relevant, and that they are instructed in its use
- Each time a pupil is introduced to a new hazardous activity (e.g. use of a tool, use of a hazardous substance etc.), it is the responsibility of the teacher to ensure that all the hazards and control measures are explained to them. The teacher must be confident that pupils have understood the risks before they are permitted to commence the activity

All Employees

All staff have legal obligations under the Health and Safety at Work etc. Act 1974 and Management of Health and Safety at Work Regulations 1999 as summarised below:

- To take reasonable care of the health and safety of themselves and of other persons who may be affected by their actions or omissions;
- To co-operate with the school to ensure that it meets its objective of providing a safe, healthy and supportive environment;
- Not to interfere with or misuse any equipment or facilities provided in the interests of health and safety (e.g. use fire extinguishers to prop open fire doors or remove the batteries from the closure fittings on doors);
- Any employee must inform their Line Manager of
 - o Any work situation which a person would reasonably consider represented a serious and immediate danger to health and safety; and/or
 - o any matter which a person with the employee's training and instruction would reasonably consider represented a shortcoming in the school's protection against arrangements for health and safety (e.g. unsafe conditions/working practices/tools/equipment etc.).

Employees are also responsible for:

- Setting a good personal example for health and safety;
- Maintaining a good standard of housekeeping within their area (e.g. floors, doorways, working areas, etc. are kept clear and free from obstructions);

- Reading and complying with this Health and Safety Policy and associated policies/procedures;
- Completing risk assessments and COSHH assessments, as directed by their Head of Department or Line Manager;
- Complying with all relevant risk assessments, COSHH assessments, and safe systems of work;
- Using plant, equipment and/or substances only when authorised to do so and in accordance with instructions and training;
- Only lifting loads that are within their personal capability;
- Attending/completing mandatory health and safety training in line with school requirements, together with any other health and safety training as directed by their Head of Department;
- Identifying to their Head of Department any health and safety training that they feel they require;
- Co-operate with all emergency procedures including fire & lockdown drills;
- Reporting any accidents, incidents, near misses, and/or confirmed cases of occupational disease to the Bursar & Foundation Secretary and their Head of Department, seeking medical treatment/first aid where appropriate, and ensuring that an entry is made in the Accident Record Book;
- Ensuring that unauthorised or improper use of plant and machinery does not occur in their area of work;
- Using the correct equipment and tools for the job and any protective clothing and safety equipment as directed;
- Ensuring that any hazardous substances are correctly used and stored;
- Reporting immediately via the online maintenance task system (or via telephone to the Caretaker for urgent issues), any defects in the premises which they observe;
- Reporting immediately to their Head of Department any suspected defects in plant, equipment, machinery; and Informing their Head of Department of any change to their state of health, either temporary or permanent, which might affect their working ability or their suitability to carry out any particular task or tasks.

Students

It is the responsibility of each individual pupil to take reasonable care of their own health and safety and not to act in a manner that places others in danger.

In particular, all pupils must:

- Comply with fire and emergency evacuation procedures and follow instructions;
- Assist staff in maintaining good standards of housekeeping;
- Use plant, machinery and equipment only when authorised to do so and in accordance with instructions;
- Wear the appropriate personal protective equipment for the task (as directed by their teacher);
- Report immediately to their teacher, any defects in the premises, plant, equipment and first aid facilities which they observe; and
- Report immediately to a member of staff, any accidents, incidents, near misses or illness.

Pupils must not interfere with or misuse anything provided in the interests of health, safety or welfare (e.g. misuse/discharge of fire extinguishers) and/or engage in horseplay that could put themselves and/or those affected by their actions at risk. Such behaviour should be dealt with appropriately i.e. disciplinary action.

The school will provide an induction covering health and safety aspects (and area specific health and safety inductions where appropriate) to ensure that pupils are aware of their health and safety responsibilities.

Contractors

All contractors must:

- Report to either Foundation or Main reception and sign in upon arrival to the school site, and sign out prior to leaving and wear the lanyard provided at all times when on site;
- Take reasonable care of their own health and safety and of those who could be affected by their acts or omissions (e.g. staff, pupils, visitors, other contractors etc.);
- Comply with the school's Safeguarding Code of Conduct;
- Submit a suitable Health and safety Policy, insurance documents (ELI and/or PLI), relevant industry certification and risk assessments/method statements to the school for approval. If they do not have a health and safety policy in place (i.e. if they have <5 employees), then they must agree to abide by the school's Health and Safety Policy;
- Use safety equipment and personal protective equipment/clothing as required by the school and as specified in the risk assessment for the activity that they are undertaking;
- Maintain all plant and work equipment to ensure that it is safe for use, including ensuring that any portable electrical equipment has a current PAT test certificate;
- Report any hazards and/or defective plant/equipment to their supervisor (and also inform the school where relevant);
- Report all accidents, incidents, near misses and incidences of confirmed occupational disease to their supervisor (and also inform the school where relevant);
- Ensure that their employees only use equipment for which they have been suitably trained;
- Observe the fire evacuation procedure and position of all fire equipment and not obstruct means of escape or fire exits; and
- Provide adequate welfare and first aid arrangements unless otherwise agreed with the school
- On completion of the project provide all completion and sign off certification including any guarantees, warranties and disposal certificates

Visitors

It is the responsibility of all visitors to take reasonable care of their own health and safety and not to act in a manner that places themselves and/or others in danger.

In particular, visitors must:

- Report to reception upon arrival and sign in;
- Read and sign the Safeguarding Code of Conduct (as per the school's Code of Practice for Visitors);
- Wear their visitor badge at all times;
- Comply with instructions given by members of staff;
- Not tamper with emergency equipment;
- Bring to the attention of staff any health and safety issues (e.g. accidents, incidents, near misses, hazards etc.);

- Wear personal protective clothing/equipment where indicated; and
- Sign out and return their visitor badge prior to leaving the site.

Health and Safety Committee

For information on the membership and function of the Health and Safety Committee, please refer to the Terms of Reference detailed in section 3.22 of this Policy.

Health and Safety Consultant

The Trust/School is using the expertise of a professional health and safety consultancy firm to ensure that it remains compliant. The appointed consultancy firm performs regular audits and provides written reports and ad-hoc assistance when required.

3.0 Arrangements

Introduction

This section details the specific procedures to be adopted by staff, pupils, visitors and contractors in order to ensure that the aims and objectives outlined in section 1 of this Health and Safety Policy are put into practice. These arrangements are supplemented by a number of co-existing school policies which relate to health and safety management of particular school activities, facilities, staff, pupils and visitors. Please note that where other related policies exist, these are clearly signposted from this 'Arrangements' section.

3.1 Accident, Incident, Near Miss, and Occupational Disease Reporting and Investigation

Our primary aim is to prevent all accidents, incidents and/or occupational disease from occurring. We want to protect all employees, pupils, visitors, and others that may be affected by our activities so that everyone goes home safely at the end of the working day. In our efforts to achieve this, we record all accidents and occupational diseases, and actively encourage the reporting of incidents and near misses.

Accidents

An accident can be defined as any unplanned, unwanted event (including an act of non-consensual physical violence) that results in personal injury or; damage to, or loss of, property, plant or materials; or damage to the environment.

N.B. All accidents, no matter how trivial they may seem, need to be reported and recorded. This can range from a small cut or bruise, to the fracture or amputation of a limb, or death.

Incidents

An incident can be defined as any unplanned, unwanted event that is not an accident or near miss but that has negative consequences e.g. an incident of verbal abuse or threatening behaviour against an employee.

Near Misses

A near miss can be defined as an unplanned event that does not result in personal injury, death or damage, but has the potential to do so. For example, a shelving unit coming away from the wall and falling, narrowly missing a pupil or member of staff.

Reporting and Recording

Staff are responsible for reporting any accidents, incidents, or near misses involving themselves, and/or any accidents, incidents, near misses that are reported to them by others (e.g. pupils, visitors, contractors etc.) as soon as possible. Where necessary, staff should also inform their Line Manager; who will ensure that an entry is made in the Accident Book. This will include the date, time and place of the event, personal details of those involved and a brief description of the nature of the event or disease. This information may then be required for investigation purposes and, where necessary, for notification to the appropriate Enforcing Authority. Accident Books are held on each school's reception. Staff are informed of these arrangements at their new starter induction and reminded of these procedures annually at inset.

If the accident is serious (i.e. if the injured person has been taken to hospital, or an employee is likely to require time off work), the Bursar & Foundation Secretary must also be informed as soon as possible. Staff and pupils are instructed on this Policy as part of the induction process.

First Aid/Medical Assistance

A separate First Aid Policy is available.

Investigations

All reported accidents, incidents, near misses and occupational disease are reviewed by the Head of Health & Safety, to determine the immediate, underlying and root causes, with a view to ensuring that effective remedial actions are taken to prevent recurrence.

Where the accident/incident/near miss caused, or had the potential to cause, serious injury; the investigation is conducted by the Head of Health & Safety together with other relevant staff (e.g. Headteacher, Estates Bursar, Head of Department, Manager, teacher etc.) and recorded on the online Accident/Incident/Near Miss Investigation form. The investigation will include taking photographs (where relevant), obtaining signed witness statements, and collating copies of all relevant documentation (e.g. training records, risk assessments, maintenance records etc.). Findings of the investigations will be communicated to relevant staff, and discussed at Health and Safety Committee meetings.

Occupational Disease

An occupational disease is a work-related disease or condition as defined in the Reporting of Injuries, Diseases and Dangerous Occurrences Regulations (RIDDOR) 2013, which has been confirmed by a medical practitioner, e.g. occupational dermatitis. For a summary of reportable occupational diseases, please visit:

<http://www.hse.gov.uk/riddor/occupational-diseases.htm>

Staff must report any suspected work-related ill health to their Head of Department, who will ensure that an entry is made in the Accident Book. This will then be investigated in a similar way as other untoward incidents, with further medical advice being sought where necessary and the Bursar & Foundation Secretary informed.

The Reporting of Injuries, Diseases and Dangerous Occurrences Regulations (RIDDOR) 2013

Where the accident, incident, near miss, or occupational disease falls under the scope of RIDDOR 2013, the Head of Health & Safety is responsible for reporting the matter to the relevant Enforcing Authority within the required timescales, and for completing the appropriate online form available at: <http://www.hse.gov.uk/riddor/report.ht> A copy of the RIDDOR report made should be printed out and attached to the Accident Book form.

Information on the types of accidents, incidents, near misses, and occupational diseases that are reportable under RIDDOR 2013 is available at: <http://www.hse.gov.uk/riddor/reportable-incidents.htm> and advice specific to schools is available at: <http://www.hse.gov.uk/pubns/edis1.pdf>

Generally, RIDDOR 2013 requires the reporting of work-related accidents that result in:

- The death of any person;
- Specified or Major injuries to workers (e.g. fractures, amputations etc. Please refer to above links for full guidance);
- Over 7-day incapacitation of a worker; and
- An injury to a member of the public (or any other person not at work) whereby the person is taken directly from the scene of that accident to a hospital for treatment to that injury. N.B. this includes pupils.
-

RIDDOR also requires the reporting of:

- Occupational diseases as outlined in the regulations (please refer to above links for details); and
- Dangerous occurrences as outlined in the regulations (please refer to above links for details).

The Bursar & Foundation Secretary is responsible for reporting all such incidents, and any other incidents of a similarly serious nature, to the insurers.

Record Keeping

All records relating to accidents, incidents, near misses and occupational disease are filed confidentially and retained for a minimum of three years, with records of accidents involving children (i.e. those under the age of 18) being retained for a period equal to their date of birth + 30 years.

Monitoring

All new accidents, incidents, near misses and incidences of occupational disease are reviewed termly by the Governor/Trustee in charge of health and safety in conjunction with the Bursar & Foundation Secretary and are reported to the termly Health and Safety Committee meetings.

Findings of investigations will be communicated to relevant staff and discussed at Health and Safety Committee meetings where relevant.

3.2 Asbestos

When materials that contain asbestos are disturbed or damaged, fibres are released into the air. When these fibres are inhaled they can cause serious diseases such as asbestosis or mesothelioma. These diseases do not affect people immediately; they often take a long time to develop, but once diagnosed, it is often too late to do anything. We recognise our responsibilities under the Control of Asbestos Regulations 2012 and will implement measures to protect all employees, pupils, visitors, contractors and others that could potentially be exposed to asbestos; so far as is reasonably practicable. The person who holds day-to-day responsibility for the management of asbestos is the Estates Bursar. Staff must not conduct any work that could disturb the fabric of the building (e.g. drilling etc.) without prior consultation with the Estates Bursar.

Asbestos Surveys

In line with guidance provided by the Health and Safety Executive, all school buildings built from the year 2000 onwards are presumed not to contain asbestos. All school buildings built before the year 2000 have been surveyed (i.e. management survey as a minimum) by a competent external contractor to determine the location and condition of any asbestos or asbestos containing materials (ACM's).

Prior to any significant refurbishment and/or demolition work, the Estates Bursar is responsible for ensuring that a refurbishment/demolition survey is completed by a competent external contractor.

Materials are presumed to contain asbestos, unless there is strong evidence that they do not.

Asbestos Management Plan

We have assessed the remaining known ACM's and produced an Asbestos Management Plan that outlines the specific arrangements in place to ensure that the risks from ACM's (and materials presumed to contain asbestos) are managed. As part of the Asbestos Management Plan, the school maintains an Asbestos Register that provides details on the location and condition of any ACM's that remain in situ. The register is updated at least annually by a competent external contractor. The Asbestos Register is held in the Estates Team Leaders office and the Foundation Office.

The risk assessments and Asbestos Management Plan are reviewed at least annually and updated when there are any changes in the matters to which they relate (i.e. following completion of any refurbishment/demolition surveys etc.).

Work on ACM's is only carried out by licensed contractors whose credentials have been checked with the Health & Safety Executive's database available at:

<http://webcommunities.hse.gov.uk/connect.ti/asbestos.licensing/view?objectId=8516>

School employees will not carry out any licensed, notifiable non-licensed, and/or non-licensed work on ACM's.

Training

We will ensure that all staff, particularly those whose work could potentially disturb asbestos (e.g. the Estates and IT teams etc.) receive Asbestos Awareness training, and that this training is refreshed every three years (as a minimum).

Information

We will ensure that any employee whose work could potentially disturb asbestos (e.g. estates, caretakers etc.) receive a familiarisation session on the ACM's in our buildings.

We will ensure that external contractors are notified of the presence of asbestos, and made aware of the Asbestos Register for the areas that they will be working in (please refer to the *Control of Contractors section 3.7* for further details).

3.3 Boarding

The organisation recognises its additional health and safety responsibilities to our Boarders and ensures that we fully comply with any health & safety aspects of the Boarding Schools : National minimum Sept 2022. For further information please also refer to the schools Boarding Handbook and other associated documentation.

3.4 Building Maintenance and Alterations

All building maintenance and/or alterations are organised via the Estates Bursar. Staff must not attempt to carry out any building maintenance and/or alterations without prior consultation with the Estates Bursar.

The organisation has a Strategy Plan which identifies areas for upgrade, refurbishment or repair, whether it involves buildings, grounds or work equipment. Continuous termly visual inspections of the whole site are undertaken by the Estates department and Health and Safety to identify any risks, maintenance or repair requirements. Major capital expenditure projects are part of the annual plan, maintained by the Estates Bursar.

When planning maintenance work or minor alterations, we will schedule the work as far as possible to avoid risks to staff and others who would normally be present in the area. Where an area includes hazardous equipment or activities either on a permanent or temporary basis, we will ensure that physical barriers are utilised, including locks and signage where necessary, to prevent access by unauthorised persons.

If work is likely to compromise an occupied building's fire escape routes or fire protection facilities, and it has been determined that it is safe to continue, we will put in place temporary arrangements and provide additional instruction as required to ensure that building users can still occupy the building safely. We will also ensure that any disrupted fire or security protection is managed throughout the projects and fully reinstated on completion.

Where work is carried out which involves breaking through walls, floors or ceilings, the school will refer to the asbestos register and check whether the work is likely to compromise fire compartments and make repairs with suitable materials to return the structure to the designed level of fire resistance.

We recognise the requirements of the Construction (Design and Management) Regulations (CDM) 2015 and the Head of Health & Safety takes the lead in ensuring that we are compliant.

We undertake risk assessments of in-house maintenance activities and devise safe systems of work, and the work of contractors is managed as described within our arrangements for 'Control of Contractors'. Permits to work are also used to formally authorise activities with the potential for higher risk, such as hot works. For all construction work carried out in-house, regardless of scale, we ensure that:

- The work is managed and supervised by a competent manager/ supervisor;
- Workers are briefed in the reasons for the work and the expectations, including any safety requirements;
- The work does not begin until there is an adequate construction phase plan in place;
- Suitable welfare facilities for workers are in place;
- Workers are competent for the tasks that are delegated to them;
- Sufficient time and resources are allowed;

- Any design or specification work undertaken by an organisation on our behalf is undertaken by competent persons who are able to eliminate hazards and control risks within the design and meet their obligations under the Regulations.

The construction work is segregated from the other activities taking place on site where necessary for health or safety - either by scheduling the work out of hours or by physical separation.

3.5 Children and Young Persons

The organisation recognises that it has an increased duty of care to children (i.e. those persons aged 15 and under) and young persons (i.e. those persons aged 16 to 18); whether they are pupils, visitors or are attending the school as part of a work experience placement. This is due to the increased level of risk posed by children and young persons as a result of their:

- Lack of experience;
- Lack of knowledge;
- Lack of risk perception;
- Physical immaturity;
- Emotional immaturity; and
- Likelihood of engaging in horseplay.

The organisation will ensure that the additional risks posed by children and/or young persons are considered in the relevant area, activity, event and educational visit risk assessments (as per the Risk Assessment Policy) to ensure that risks are eliminated where possible, or where they cannot be eliminated completely; reduced so far as is reasonably practicable through the use of control measures.

Typical control measures that may be introduced include:

- Ensuring that there are adequate supervision ratios in place, particularly for practical activities and educational visits;
- Training and instruction, e.g. providing health and safety inductions, briefing pupils on the key elements of risk and COSHH assessments, practical demonstrations etc.;
- Developing and implementing a code of conduct to minimise the risk of dangerous horseplay, particularly for practical activities and educational visits;
- Introducing prohibitions, e.g. areas, activities etc.;
- Physical controls to prevent unauthorised use/access, such as: locking labs, kitchens, workshops and hazardous chemical stores when not in use; or lockable isolators on machinery in workshops etc.; and ▪ Use of the disciplinary procedure for any pupils engaging in dangerous horseplay.

Arrangements for preventing injury or ill health to pupils will be implemented and communicated to pupils and also to parents where applicable.

Risk assessments and significant findings will be recorded and communicated to relevant staff.

3.6 Competence and Training

Training needs of employees are identified upon recruitment, and on an ongoing basis; for example: as a result of risk assessments or accident investigations; through site inspections or audits; and arising from changes in legislation or standards.

All employees are inducted in the contents of this Policy with particular emphasis on their personal responsibilities. All new employees and volunteers also receive basic induction training on general health and safety matters, including:

- The findings of risk assessments;
- Arrangements for first-aid;
- Fire and emergency procedures;
- Expected standards of behaviour and housekeeping;
- How to report accidents, incidents, near-misses, and/or occupational diseases;
- How to report unsafe conditions or other safety concerns;
- Any special hazards and control arrangements affecting the workplace;
- Any areas that they are prohibited from entering; and
- Any activities that they are prohibited from undertaking.

The general Health and Safety induction is carried out jointly by HR, a member of the Senior Leadership Team and Head of Health & Safety. This is kept as a signed and dated record that the induction training took place.

Where an individual takes on specific health and safety responsibilities they will receive relevant health and safety training in their responsibilities, for example this applies to directors, managers, and supervisors.

Specific training should be provided for staff undertaking specialist roles, such as but not limited to:

- Fire Wardens;
- First Aid at Work training or Emergency First Aid at Work for First Aiders;
- Food Hygiene Level 2 (Catering) for Food Handlers;
- Control of Substances Hazardous to Health (COSHH) for those working with hazardous substances;
- Manual Handling
- Work at Height/Ladder Safety training for those undertaking work at height;
- PASMA Towers for Users for those erecting, using, and/or dismantling mobile tower scaffolds; and

Training will also be provided at the introduction of new equipment, new technology, or work procedures. Young workers i.e. those under 18 years old, will receive additional training and supervision as required.

We consult with staff about the planning and organising of health and safety related training through the Health and Safety Committee and regular staff briefings and inset days.

Records of all training (both formal and informal) including the date of training, name of staff member/volunteer receiving training, trainer name, and content covered, are made and held within the staff HR files and on a Central Training Matrix.

Where we do not have the necessary in-house competence to undertake a specific task or specialist work, we will utilise specialist contractors who have been assessed for their competence.

3.7 Consultation with Employees

The organisation recognises its duties under the Safety Representatives and Safety Committees Regulations 1977 and Health and Safety (Consultation with Employees) Regulations 1996 to consult with employees on the following matters:

- The introduction of any measure which may substantially affect their health and safety at work, e.g. the introduction of new equipment, new systems of work which may cause stress etc
- The commencement of works in the immediate environment which could present risk (Asbestos, noise etc);
- Arrangements for getting competent people to assist in complying with health and safety laws;
- The information we must give our employees on the risks and dangers arising from their work, measures to eliminate or reduce these risks, and what employees should do if they are exposed to a risk;
- The planning and organisation of health and safety training; and
- The health and safety consequences of introducing new technology.

3.8 Control of Contractors

The organisation recognises its duty to help ensure that no-one is harmed during work undertaken by contractors (e.g. electricians, plumbers, building contractors, cleaning/maintenance contractors etc.), and that its buildings and grounds are safe to use and maintain.

When planning maintenance work or minor/major alterations, we will schedule the work so far as possible to avoid risks to staff and others who would normally be present in the area.

The school recognises that the majority of work undertaken by contractors will be deemed as 'construction work,' and will therefore fall under the Construction (Design and Management) Regulations 2015, whereby the school has duties as a client to:

- Appoint the right people at the right time, including checking competence of all appointees;
- Issue a client brief (where relevant) outlining the purpose, aims and expectations of the work;
- Allow sufficient time and resources for the design, planning and construction work to be undertaken properly;
- Provide information to the designer and contractor(s) as soon as is practicable;
- Communicate regularly with the designer and contractor(s);
- Ensure that there are suitable management arrangements in place for the work including the provision of welfare facilities for use by contractors/staff;
- Ensure that the contractor (or where there is more than one contractor, the Principal Contractor) has drawn up a suitable Construction Phase Plan before the work starts;
- Keep the health and safety file and ensure a suitable induction for working on site;
- Protect members of the public, including employees, pupils, visitors etc.;
- Ensure that arrangements for the management of health and safety are maintained and reviewed throughout the project;

- Ensure workplaces are designed correctly;
- For projects involving more than one contractor and/or designer:
 - Appoint a Principal Designer (PD) and Principal Contractor (PC) as soon as is practicable, and in any case before the construction phase begins;
 - Take reasonable steps to ensure that the PD and PC comply with their duties;
 - Ensure the PD prepares a health and safety file;
 - Keep the health and safety file up to date and available for inspection at a later date, and passing it to a new owner if the interest in the structure is disposed of; and
- Notify the Health and Safety Executive (HSE) if the construction project is likely to last longer than 30 working days and have more than 20 workers working simultaneously at any point, or exceed 500 individual worker days;

When working on school premises it is considered that contractors are joint occupiers for that period and therefore we have joint liabilities. In order to meet our legal obligations, we will ensure that prior to engaging any contractor they are competent and that any works are carried out safely.

All contractors are organised via either the Estates Bursar or the Estates Team Leaders. Staff must not attempt to engage with any contractors without prior consultation with the Estates Bursar.

The following factors will be considered as part of our procedures for vetting contractors:

- The contractor's Health and Safety Policy, risk assessments, method statements etc., as applicable;
- Confirmation that all workers are suitably qualified and competent for the work (including a requirement for viewing of evidence where relevant);
- Evidence showing that appropriate Employers' and Public Liability Insurance is in place;
- Clarification of the responsibility for provision of first aid and fire extinguishing equipment;
- Details of articles, hazardous substances, plant and equipment intended to be bought to site, including any arrangements for them;
- Clarification for supervision and regular communication during work including arrangements for reporting problems or stopping work where there is a serious risk of injury, and;
- Confirmation of DBS (Disclosure and Barring Service) checks where relevant.

N.B. If the contract is short and the work will not create hazards of any significance, then not all of these checks may be made.

Similarly, we have a parallel duty to the contractor and must ensure that the contractor is not put at risk by our own activities for the duration of the contract. We will stop contractors working immediately if their work appears unsafe. Staff should report any concerns to the Estates Team Leaders or the Estates Bursar immediately.

Contractor Induction

On arrival at our site, contractor's representatives are questioned and briefed by the Estates Team Leaders using the Contractor Induction Checklist and issued with essential information, such as:

- Information about risks which could not be eliminated at the design stage;
- Any restrictions on the time or location in which the work is done;

- Access, parking and road traffic rules;
- Information about other people who could be present in the premises or could be at risk in the vicinity of the works;
- Restrictions applying to the storage of goods, materials, skips, site huts and containers;
- Rules regarding the storage of waste awaiting collection and removal of waste from site;
- Smoking restrictions;
- Rules about work on the electrical installation or use of electrical equipment;
- Requirements for work on the gas system;
- General rules about the need to maintain escape routes and access to firefighting equipment;
- Any particular hazards within the premises (e.g. presence of asbestos, confined spaces, fragile roofs etc.) within work areas likely to be used by the contractors;
- Restrictions on the introduction of certain high hazard equipment or processes, unless they are controlled under a permit to work;
- Restrictions on the use of our welfare facilities e.g. toilets, washing facilities, kitchens;
- Requirements for supervision and quality assurance for sub-contractors;
- The availability of our first aid facilities and personnel, or the requirement to provide their own;
- DBS check arrangements and/or supervision requirements;
- Requirements to report all accidents, incidents, and/or near misses to the Estates Bursar ; and
- Contact details of our representative responsible for coordinating the work, who can be contacted for further information

Permits to Work

As mentioned above, for particularly hazardous work, a Permit to Work may be required. For example:

- Hot work (e.g. welding, soldering, cutting, brazing, grinding, blow lamps, bitumen boilers etc.);
- Asbestos
- Working at Height

Permit to Work templates are held by the Estates Team for use as and when required.

The Estates Bursar identifies work which will require a permit and acts as the Authorised Permit Issuer, completing the document with details of the work to be undertaken, foreseeable hazards, the precautions to be implemented by the contractors and the start and finish time of the permit. Both parties sign to indicate that particular work methods and precautions have been agreed.

Contractor's representatives are required to keep a copy of their permit at the place of work which may be inspected by our managers. At the end of the permitted time, the permit is closed by sign off from both parties to indicate that the work is finished and the work area is safe, or an extension sought where necessary.

Monitoring

All work by contractors is monitored periodically to:

- Review progress and check the quality of the workmanship;
- Check that the workers on site are those expected, and who have signed in;
- Identify problems or unanticipated risks at an early stage;
- Check that work is restricted to the agreed areas and does not involve unauthorised work;
- Check that method statements and agreed control measures are being followed, and that contractors are complying with site rules and generally working in a safe manner.

Where monitoring detects poor standards, this is addressed with the contracting company concerned and, if necessary, monitoring frequency is then increased. Where appropriate, work is stopped whilst a solution is found.

Contractor Review

On completion of works, the Estates Bursar ensures that we receive the required certification, operating instructions, product guarantees and other necessary health and safety information. The Estates Bursar will also ensure that ongoing inspection and maintenance requirements of new equipment are identified and scheduled.

The Estates Bursar also leads a contract review process to evaluate satisfaction with the contractor's work and identify any other concerns which may have arisen. In particular the review covers:

- Quality of the work;
- Compliance with rules and general attitude towards health and safety;
- Effectiveness of communications;
- Decision whether to add or delete the organisation from the preferred contractor list;
- Any improvements required to the policy and procedures for contractors.

This process takes place on completion of the work or, in the case of contracts for regular work, takes place at least every six months.

3.9 Control of Substances Hazardous to Health (COSHH) - Inc. Radiation

Introduction

The organisation recognises its duties under the Control of Substances Hazardous to Health (COSHH) Regulations 2002 (as amended) and is committed to ensuring that all reasonable steps are taken to prevent exposure of employees, pupils and others to substances hazardous to health, or where exposure cannot be prevented, that it is controlled within statutory limits.

This guidance note provides a framework to be adopted to ensure compliance with the COSHH regulations.

Summary of Actions

- Complete an inventory identifying all hazardous substances used in your premises and obtain material safety data sheets for these.
- Ensure that suitable arrangements are in place for appropriate secure storage and locations are shared with the emergency services in case of emergency.
- Ensure that a documented risk assessment is made for the use of any substances which present a significant risk to health.

- Ensure that controls are in place and are adequately monitored for effectiveness.
- Ensure that any equipment required for controlling risk is being adequately maintained
- Ensure all staff have received information, instruction and training where required
- Ensure records of assessments are being kept on the premises.

Legal Framework

The aim of the COSHH Regulations 2002 is to ensure that where a need for the use of a hazardous substance is required, that the situation is assessed and appropriate control measures are taken.

Specifically, they require employers to:

- a) assess the health risks which arise from hazardous substances in their work activities and;
- b) ensure that the exposure of personnel to substances hazardous to health is either prevented or adequately controlled;
- c) ensure that any equipment provided to control the risk e.g. local exhaust ventilation, fume cupboards, personal protective equipment (PPE) is adequately maintained
- d) provide information, instruction and training to staff and others who may be affected on the level of risk and how it is to be controlled.
- e) provide adequate and appropriate health surveillance when required; *

Substances Hazardous to Health

Substances hazardous to health as defined by the COSHH regulations are:

- a) substances classified as very toxic, toxic, harmful, corrosive or irritant. These can be identified by their warning label and carry the pictograms detailed below.
- b) Biological agents directly connected with work including micro-organisms.
- c) Dust of any kind when present as a substantial concentration in the air.
- d) Substances which have a Workplace Exposure Limit (WEL)¹ assigned to them by the Health and Safety Commission. (Examples include wood dusts and chlorine.)
- e) Any other substance not specified above which may create a comparable hazard to a person's health.

The only exceptions are those things which are already being controlled by their own specific legislation, for example, asbestos, lead, radioactive substances.

Such substances may be hazardous through inhalation, ingestion, and/or absorption through the skin or skin contact.

In schools these substances will generally be found in school laboratories, school practical workshops, print rooms etc. Workshops and cleaner's stores in all premises are also likely to contain such substances.

It should be remembered that substances hazardous to health can also be created by practical work (e.g. wood dust, products of chemical experiments, work with micro-organisms). In such situations, prevention or effective controls may be required to minimise the risks to health.

Establishments should ensure that an inventory of all hazardous substances used/generated on site is compiled; this inventory should then be used to identify those substances which present a significant hazard and thus require an individual risk assessment.

The school does hold a small number of radioactive sources for very specific use in the Science curriculum only. These are routinely inspected by the local authority to check compliance with CLEAPSS L93 to ensure that we are meeting the Ionising Radiation Regulations 2017.

Our Radiation Protection Officer is provided by Surrey County Council and our named RPS in school is Ingrid Rolland. All documentation is kept by the RPS in the Science Department.

Risk Assessments

The primary requirement for the control of hazardous substances is to conduct a COSHH Risk Assessment before the use or generation of any such substances.

Any process which is liable to expose staff, children or visitors to substances hazardous to health should not be carried out unless a "suitable and sufficient" assessment has been made of the risks to health and measures are in place to eliminate, or adequately control exposure to such substances.

Within curriculum areas (in particular science and art with pupils above the age of eleven) then heads of department are responsible for the control of substances hazardous to health and ensuring that guidance and model risk assessments contained in the relevant national publications are followed:

Science & DT

The School is a member of CLEAPSS (Consortium of Local Education Authorities for the Provision of Science Services).

All up to date information is available on the CLEAPSS website. <http://www.cleapss.org.uk/>

- CLEAPSS School Science Service Laboratory Handbook
- CLEAPSS Haz cards
- Safeguards in the school laboratory 11th edition, ASE 2006. <http://www.ase.org.uk/>
- Association for Science Education's (ASE) "Topics in Safety"

For all schools with children below the age of eleven, guidance is contained in:

<https://www.ase.org.uk/resources/health-and-safety-resources/revised-topics-in-safety/>

Art

- National Society for Education in Art & Design (NSEAD)
<http://www.nsead.org/hsg/index.aspx>

Where model assessments are used it should be ensured these are also incorporated into schemes of work, planning etc. and adapted to local circumstances where necessary. e.g. where equipment may differ from that specified in the model assessment, difficult pupils etc.

Where generic COSHH risk assessments are not available managers / head teachers must ensure the risks posed are adequately assessed by a 'competent' person. Further guidance and the COSHH risk assessment form are available with the responsible person (listed below).

A competent person is one with sufficient:

- knowledge and experience of work activities;
- knowledge of substances used, generated;
- ability to determine effective control measures

Material safety data sheets should be obtained from the manufacturer of the product. The supplier must provide these on request.

These data sheets are not by themselves a suitable and sufficient COSHH risk assessment. The information in the data sheet must be compared to the particular task and circumstances in which the substance is to be used and a decision made about the measures necessary to adequately control exposure.

Controls

Exposure to substances hazardous to health should either be prevented altogether, substituted with a less harmful substance, or (where it is not reasonably practicable) adequately controlled.

In all cases personal protective equipment (PPE) should only be used where it is not reasonably practicable to adequately control exposure by other means. For example, fume cupboards in science labs should always take precedence over masks.

If a substance is hazardous by inhalation it is likely to have been assigned a "workplace exposure limit" (WEL). This should be used to assess the level of control.

Where PPE is identified as necessary for use by staff and pupils it should be ensured it is suitable for the purpose.

Employees have a duty to make full and proper use of all control measures identified as required in the risk assessment and must wear appropriate PPE (lab coat, eye protection, gloves etc.) where this is identified as required. Adequate information and training must be provided on its use and maintenance.

Maintenance, Examination and Testing

Where controls such as fume cupboards, dust extraction for wood working equipment etc are provided it is necessary to ensure that they are properly maintained. This will require visual and operational checks pre-use in addition to a thorough examination and tests of engineering controls.

In the case of tests for fume cupboards these should be carried out at least every fourteen months. A record of the results of all examinations must be kept for at least 5 years.

All PPE must be kept clean, in good repair and stored correctly to prevent contamination. Any Respiratory protective equipment (RPE) should be inspected regularly (Monthly) and a record of inspections kept for at least 5 years.

Responsible Persons

The persons responsible for identifying hazardous substances, maintaining the inventory, obtaining Safety Data Sheets, and completing the COSHH assessments are:

Area	Responsible Person
Art Department	Head of Art
Catering Department	External Contractor: Harrisons Catering
Cleaning Department / Housekeeping	External Contractor: K M Cleaning
Domestic Supplies	Domestic Services Manager
Estates	Estates Team Leaders
Equine	Stables Manager
Gatton Trust	Chief Executive of Gatton Trust
Grounds	Estates Team Leader / Contractor
Housekeeping	Domestic Services Manager
Junior School	Headteacher of Junior School
Laundry	Domestic Services Manager
Swimming Pool	Estates Team Leaders
Science	Head of Science

3.10 Disabled and Temporarily Disabled

Where we employ persons or take on pupils with disabilities, or where existing employees/pupils become disabled, we will endeavour to ensure that the workplace is adapted for their needs including arrangements to ensure their health, safety and welfare.

In the case of temporary disability such as a broken limb, risk assessment will be undertaken and it may be necessary to exclude the individual from our workplace if adaptations are not reasonably practicable in the short timescales involved.

When employees have been issued with a fit note by a doctor, they are not permitted to work unless either the date to which they have been signed as unfit to work has been reached or, if the fit note indicates they may be fit to work subject to conditions, that those conditions have been assessed and relevant changes have been made to meet them.

We ensure that the needs of disabled staff/pupils and visitors are taken into account within risk assessments and if necessary, undertake an individual risk assessment for the work of the particular employee/pupil, taking into account their abilities.

Where the disability could affect the employee's/volunteers' ability to evacuate in an emergency (e.g. impaired mobility, hearing and/or vision) then we also develop a Personal Emergency Evacuation Plan (PEEP) to cover fire evacuations.

Relevant risk assessments (together with the PEEP) will be reviewed at frequencies which take account of any change in the person's health condition.

The health and safety of visiting disabled/temporarily disabled persons is also taken into consideration when planning events, to ensure that any risks are either eliminated, or reduced so far as is reasonably practicable.

3.11 Display Screen Equipment (DSE)

Display Screen Equipment (DSE) is a device or equipment that has an alphanumeric or graphic display screen, regardless of the display process involved; it includes both conventional display screens and those used in emerging technologies such as laptops, touch-screens and other similar devices.

This policy is aimed at those employees classed as DSE Users, i.e. those employees that

- a) Normally use DSE for continuous or near-continuous spells of an hour or more at a time; and
- b) Use DSE in this way more or less daily; and
- c) Have to transfer information quickly to or from the DSE; and also need to apply high levels of attention and concentration; or are highly dependent on DSE or have little choice about using it; or need special training or skills to use the DSE.

The organisation recognises its duties under the Health and Safety (Display Screen Equipment) Regulations 1992 as amended by the Health and Safety (Miscellaneous Amendments) Regulations 2002. All reasonable steps will be taken by the school to secure the health and safety of employees and pupils who work with display screen equipment. To achieve this objective the School:

- Identifies those employees who are users as defined by the regulations;
- Ensures that all users complete the DSE Workstation Checklist available via Human Resources as soon as possible upon employment and following any changes (e.g. a change of desk or office move);
- Reviews all completed Workstation Checklists and implements necessary measures to remedy any risks found as a result of the assessment;
- Endeavours to incorporate changes of task within the working day, to prevent intensive periods of on-screen activity;
- Ensures that where appropriate, adequate breaks are taken and supported by Line Managers
- Reviews software to ensure that it is suitable for the task and is not unnecessarily complicated;
- Provides support for all defined DSE users towards eye tests and corrective appliances (glasses or contact lenses);
- Investigates any discomfort or ill-health believed to be associated with the use of DSE and takes appropriate remedial action;
- Makes special arrangements for individuals with health conditions that could be adversely affected by working with DSE.

Employees that are DSE Users must:

- Complete the DSE Workstation Checklist available from Human Resources as soon as possible upon employment, and following any changes (e.g. a change of desk or office move);
- Comply with the instructions and training given regarding safe workstation set-up and use, including the need for regular changes of activity or breaks and the use of the equipment provided;

- Inform their Line Manager or Human Resources of any disability or health condition which may affect their ability to work using DSE or be affected by working with DSE (this information will be treated confidentially); and
- Report to the Head of Health & Safety any discomfort or health concern believed to be associated with the use of DSE (this information will be treated confidentially).

3.12 Driving for Work

Royal Alexandra and Albert School, the charitable Foundation and Gatton Trust is committed to reducing the risks to its staff, pupils and others when driving/travelling in the school minibuses, and/or when driving/travelling in any other vehicle on behalf of the school (e.g. private cars). As such, the trust has arrangements to ensure that:

- Only persons authorised by the Transport Co-ordinator to operate school vehicles;
- All school vehicles, unless they are not required to travel on public roads e.g. tractors, have valid insurance covers, tax, registration and MOT test certificates;
- All school vehicles are well maintained and regularly serviced in line with the required legal standard to ensure that they are safe for use as organised by the Transport Coordinator.
- The minibuses are correctly licensed (e.g. section 19 permit);
- All school vehicles have a suitably equipped first aid box on board as well as a hi-vis jacket, emergency triangle and access to up to date contact details in case of emergency.
- The minibuses are covered by breakdown and recovery support.

Driver Competence

Royal Alexandra and Albert School, the charitable Foundation and Gatton Trust also have procedures in place to ensure that all drivers are legally permitted and competent to drive school vehicles and/or their own vehicle on school business, and carries out checks on licences, convictions, medical conditions etc. upon employment and annually thereafter.

All minibus drivers are also expected to sign to say they have read and understood the Minibus Handbook provided by the Transport Coordinator and inform the school of any changes in their ability to drive a work vehicle.

The school also provides additional driver training where deemed necessary via an external training provider (e.g. D1 licence or competence test for minibus drivers etc.).

Drivers are also given responsibility for carrying out certain pre-use checks on vehicles to ensure their safety, and for planning their journey (e.g. adequate rest stops, suitable number of drivers etc.). Drivers are responsible for ensuring that their vehicles are correctly loaded, that loads are secure and do not exceed their capacity, and that all passengers are wearing seatbelts.

3.13 Drugs and Alcohol

Please [Click Here](#) for the Alcohol, Tobacco, Drug and Substance Abuse Policy

3.14 Educational Visits

Royal Alexandra and Albert School is committed to offering its pupils as wide a range of educational trips and visits as possible insofar as they are relevant to the curriculum, enhance pupils' understanding and experience and help to develop independence. All educational trips and visits undertaken by the school will have clearly defined objectives such that pupils will be able to work towards achievable aims relevant to particular aspects of their studies.

The School will ensure that educational trips and visits are open to all of its pupils and will endeavour to make arrangements such that any children with particular needs can participate and learn alongside their peers.

In organising educational visits, the safety and security of pupils will at all times be paramount and the school will ensure that all health & safety requirements are fulfilled. The Governing Body has taken account of the following legislation and Guidance in compiling this Policy and Procedure:

- School Standards and Framework Act 1998
- Health & Safety at Work Act 1974
- Management of Health & Safety at Work Regulations 1999
- Reporting of Injuries, Diseases and Dangerous Occurrences Regulations 1995
- Health and Safety of Pupils on Educational Visits – a Good Practice Guide 1998 (incorporating a Handbook for Group Leaders)
- Standards for Adventure (DFE 2002)
- Children Act 2004
- The SEN & Disability Act 2001
- Outdoor Education Advisers' Panel (OEAP)
- Activity Centres (Young Persons' Safety) Act 1995
- Group Safety at Water Margins (DFES/CCPR)
- Health and Safety Advice on Legal Duties and Powers for Local Authorities, Head Teachers, Staff and Governing Bodies. (DFE)

In assessing the appropriateness of a visit or venue, the School will consider the following:

- The nature and purpose of the visit.
- The staff responsible for the visit, including pupil's behaviour.
- Planning, Risk Assessments, Insurance
- The correct level of pupil to staff ratios
- Vetting Checks where applicable.
- Means of travel and transport, its safety and reliability
- The suitability of the venue for the visit, its safety and security arrangements
- First Aid facilities and trained staff requirements
- Medical and other special needs of children
- Means of communication with parents.
- Emergency Procedures

All trips and visits will be planned and managed in accordance with the official school procedure for educational trips and visits (see link below) and approval to run any visit will be granted by the Headteacher, who may delegate this responsible to a member of senior management.

All residential trips will also be referred to the appropriate authority via SCC Evolve to ensure that they are also satisfied that all necessary pre-planning and assessment has been properly undertaken.

When planning an activity involving caving, climbing, trekking, skiing or water sports, the school will check that the provider holds a licence as required by the Adventure Activities Licensing Regulations 2004 (for England, Scotland and Wales).

3.15 Electricity

The organisation recognises its responsibilities under the Electricity at Work Regulations 1989 and will take all reasonable steps to secure the health and safety of employees, pupils and others who use, operate or maintain electrical equipment.

To ensure this objective Royal Alexandra and Albert School, the charitable Foundation and Gatton Trust will:

- Ensure electrical installations and equipment are installed in accordance with IET Wiring Regulations;
- Maintain the fixed wiring installation in a safe condition via periodic inspections in line with the recommended intervals stated within the IET Wiring Regulations, and completion of remedial works identified as being required (these will be arranged by the Facilities Manager);
- Ensure employees/ contractors who carry out electrical work are competent to do so and that contractors carrying out electrical works are NICEIC approved;
- Ensure that lightning protection is inspected annually by a competent person.
- Inspect and test portable and transportable electrical equipment annually, or as often as required to ensure safety (i.e. PAT testing).
- Maintain test equipment and ensure that it is calibrated on an annual basis;
- Maintain detailed records and copies of all electrical test certificates;
- Ensure that no person in its employment is allowed to work on or near any live conductor, except where the live conductor is insulated so as to prevent danger. Contractors will be used and the following factors will be considered when determining whether work with live conductors is justified:
 - When it would not be practicable to carry out work with the conductor's dead (e.g. testing purposes);
 - The need to comply with other statutory requirements; and
 - The level of risk involved in working on the live equipment and the effectiveness of the precautions available set against the economic need to perform that work.

The organisation recognises that statutory legislation only permits persons at work to be near live conductors if it is not feasible to do the work at a safe distance from the live conductors. Additionally, persons whose presence near the live conductors is not necessary should not be so near the conductors that they are at risk of injury.

Employees must:

- Visually check electrical equipment for damage before use (e.g. damaged leads, plugs, casings, sockets etc.);
- Report any defects found in electrical appliances via Quad Pro to the Estates Department. However, if there is any doubt whether the equipment is safe then it should be labelled 'out of use' and immediately withdrawn until it has been tested and declared fit for use by a qualified person;
- Report any suspected defects found in the electrical system (e.g. damaged plug socket etc.) to the Estates Team
- Not use defective electrical equipment;
- Not use any electrical equipment marked with a 'fail/ed' test sticker;
- Not carry out any repair to any electrical item unless qualified and authorised to do so;

- Switch off non-essential equipment from the mains when left unattended;
- Not use any electrical item that they bring onto school premises until it has been tested and recorded;
- Not leave electric cables in such a position that they will cause a tripping hazard or be subject to mechanical damage;
- Never run extension leads under carpets or through doorways;
- Not daisy-chain extension leads to make a longer one or increase the number of power sockets;
- Not use square adapter sockets – devices that plug into mains sockets to increase the number of outlets; and
- Ensure that electrical items are made available for PAT testing upon request.

3.16 Emergency Procedures

It is the policy of Royal Alexandra and Albert School, the charitable Foundation and Gatton Trust that suitable and sufficient emergency procedures are in place in order to facilitate effective evacuation, or other appropriate action, and to ensure that employees', pupils', visitors' and contractors' health and safety is not unduly put at risk during the course of such action.

The school has a number of separate policies relating to emergency procedures as follows:

- Critical Incident Management Plan
- Fire Evacuation Plans
- Health Centre Policy
- Administration of Medicines Policy
- First Aid Policy

These must be read in conjunction with this Health and Safety Policy.

3.17 Equestrian Centre

The Equestrian Centre operates in accordance with the organisation's Health & Safety policy but must also refer to additional H&S guidance relating to Stable and Horse Management.

Please refer to these separate H&S Safety Policies and Risk Assessments available from the Stable Manager.

3.18 Fire Safety Responsibilities

The person with overall responsibility for fire safety for our organisation is the Headteacher.

Fire Safety Assistance

Royal Alexandra and Albert School has appointed external Churches Fire and Security Ltd to provide competent assistance on fire safety matters in accordance with Article 18 of the Regulatory Reform (Fire Safety) Order 2005.

Fire Safety Risk Assessment

An external Health & Safety Contractor Hettle Andrews Risk Management, has undertaken a fire safety risk assessment of our premises and reviews this on an annual basis.

The risk assessment is held online and the Estates Bursar is responsible for ensuring that the recommendations arising from the assessment are implemented.

Fire Prevention

Fire hazards are identified within the fire safety risk assessment and recommendations implemented to control them. In particular we have implemented risk control measures in response to the risks potentially arising from the hazards of heating, lighting, electricity, waste accumulation, storage of combustibles, arson, smoking, neighbouring premises activities, flammable liquids and flammable gases etc.

Fire prevention measures which have been implemented e.g. electrical inspection and testing, control of hot work, gas safety inspections, regular removal of waste, locking of external bins, smoking rules, and correct storage of flammable liquids; all information is recorded within the Fire Risk Assessment.

Fire Alarm and Detection System

Our premises are covered by a fire alarm system incorporating automatic fire and smoke detection and manual call points.

The alarm system is tested by the Estates team or select school staff on a weekly basis and serviced by an external contractor routinely on a six-monthly basis.

The alarm systems in Boarding Houses are tested by Boarding Staff on a weekly basis by activating a different alarm call point each time in rotation. All Staff/Pupils/members of the public are made aware of the fact that the alarm is a test. During the alarm test, we take the opportunity to check the audibility of the alarm throughout the premises.

The results of alarm testing and servicing are recorded and held online and available via Estates in the Foundation Office.

Emergency Lighting

An emergency lighting system incorporating battery back-up is installed, which activates on failure of the lighting circuit. The system is subject to a monthly activation test and an annual full discharge test organised by Estates Bursar. The results of emergency lighting tests are recorded and held in the Foundation Office.

Signage

Directional fire escape signs are displayed throughout the building to indicate the location of emergency exits.

Other signs are also displayed where required, including

- To identify the location of the assembly point;
- To describe the type and function of fire extinguishers;
- To describe the correct operation of exit door hardware (i.e. 'push bar to open', 'turn to exit', break to exit)
- To show the correct operation of gas shut off valves;
- To show 'fire action' required;
- To identify fire doors which must be kept shut (or kept clear);
- To designate the building as non-smoking in accordance with smoke free law;
- To indicate on each lift landing 'in the event of fire do not use lift';

All signs comply with the Health and Safety (Safety Signs and Signals) Regulations 1996.

Escape Routes and Exits

Structural fire separation is provided by protected routes surrounded by fire resistant walls, ceilings, and fire doors.

Fire doors are kept closed by self-closing devices and/or kept locked shut were designed to be.

The Estates team and Boarding staff routinely check that all escape routes are clear, that exit doors are functioning correctly and that fire doors are either kept shut, kept clear, or locked shut as required.

The condition of each fire door including the presence and condition of door closers, intumescent and smoke seals is checked annually and is recorded on a checklist retained in the Foundation office.

The results of escape route and fire door checks are recorded and held online and available from the Foundation office.

Fire Extinguishers

We have selected suitable numbers and types of fire extinguishers and located these in accordance with the findings of the fire safety risk assessment. Select staff have been trained in the practical use of extinguishers and the circumstances when they can be safely used and when they should not be used. The emphasis however will always be for staff to evacuate and ensure their own safety and that of others.

Fire extinguishers are subject to an annual servicing contract which is carried out by Churches Fire.

Disabled Persons and Others Requiring Assistance

For any disabled persons including temporarily disabled identified within the school who may need assistance, a Personal Emergency Evacuation Plan (PEEP) is put into place, where a Fire Warden is identified to ensure the persons are evacuated safely. For visitors, it is the responsibility of the person escorting them to ensure they are evacuated to a place of safety.

PEEPs are completed by both WHO? where necessary and communicated with the person identified and all involved.

Fire Drills

Fire drills are carried out termly for the school with additional drills held at nighttime for Boarding. Records of drills are held online and can be requested from the Foundation Office.

Training for all Staff/Volunteers

New staff/volunteers are provided with information on emergency procedures on their first day of employment/volunteering, including the location of escape routes, the sound of the alarm and the location of the assembly point by their Line Managers. In addition, this is included as part of the general Health & Safety induction, which is carried out by the Head of H&S. An Induction Checklist is kept as a signed and dated record that the induction training took place.

All staff/volunteers receive termly refresher training in fire safety and fire procedures by way of a fire drill which is recorded on the Fire Log and annually during Inset training.

Training for Fire Wardens

Any staff/volunteers nominated as Fire Wardens have received training in their role, which is refreshed periodically.

Cooperation and Coordination

Contractors working on the premises are briefed in essential fire safety matters including location of escape routes, the sound of the alarm and the location of the assembly point. We ensure that contractors working on gas and electrical systems are suitably qualified. Where contractors need to conduct 'hot works' we ensure that fire risks are adequately controlled and apply a Permit to Work. Further details of our arrangements for the control of contractors are included within a separate section of this policy.

3.19 First Aid

Royal Alexandra and Albert School, the charitable Foundation and Gatton Trust recognises its responsibilities under the Health and Safety (First Aid) Regulations 1981 to provide adequate and appropriate equipment, facilities and personnel to enable the timely and competent administration of first aid and the effective implementation of the first-aid policy.

The school has a number of separate policies relating to emergency procedures as follows:

- First Aid Policy [Click Here](#)
- Health Centre Policy
- Administration of Medicines Policy

These must be read in conjunction with this Health and Safety Policy .

We have undertaken a risk assessment of first aid needs to determine the numbers of First Aiders and the first aid facilities required.

A First Aider is a person who has been trained and has a valid certificate in either First Aid at Work (3 day course) or Emergency First Aid at Work (1 day course). First Aiders need to attend refresher training every 3 years in order for their certificate to remain valid.

An Appointed Person is the person assigned to manage first aid provision and training, take control of the situation when someone is ill or injured, including calling for an ambulance or delegate that responsibility in their absence. They are responsible for first aid equipment and keeping first aid boxes stocked.

The following arrangements have been implemented:

- The appointed person at Royal Alexandra and Albert School is Lana Crouch – Health Care Assistant.
- The school will ensure that a determined (by risk assessment) number of staff, will have undertaken the 3 day First Aid at Work Qualification, supported by as many staff as possible with the one-day Emergency Aid in Schools training and will hold valid certificates.
- First aid training is arranged by the Health Care Assistant who is based in the Health Centre and reports to the Health Centre Manager. Re-training is arranged to take place prior to the expiry of first aiders' certificates.
- We have a Health Centre on site and the Appointed Person is responsible for ensuring that first aid supplies are correctly stocked at all times
- Any prescription or non-prescription medicines will be kept locked away securely (fridge or secure cupboard) under the responsibility of the Health Centre Manager in the Health Centre and on occasion in the staff office of the Boarding Houses following consultation and training if appropriate from the Health Centre.

- First aid boxes will be maintained in several suitable positions around the school and a list of locations is displayed in the main office, the position of each box marked by a sign (white cross on a green background) and as far as possible, adjacent to hand-washing facilities

3.20 Gas Safety

The organisation will ensure that all work carried out on gas systems and appliances are in accordance with the requirements of the Gas Safety (Installation and Use) Regulations 1998 and related Approved Code of Practice.

There is minimal gas supply on the site which is restricted to the science department laboratories only all of which have local emergency gas shut down points.

Maintenance of Gas Equipment

It is the responsibility of the Estates Bursar to ensure that all gas appliances (e.g. boilers, ovens, gas points, etc.) are serviced annually, and in accordance with the manufacturer's recommendations.

The Estates Bursar will ensure that all work on gas appliances is carried out by an external Gas Safe Registered engineer, and will retain records of all servicing, maintenance and repairs.

Summary of Key Actions

The key actions we take to ensure the safety of gas fired appliances are:

- Identify all gas-fired appliances and create a maintenance schedule for each;
- Arrange for servicing by a Gas Safe registered engineer in line with the schedule and keep records;
- Highlight all gas shut-off points and ensure that relevant staff are instructed in their use.

Gas Emergencies

In the event of a suspected gas leak staff should:

- Call the 24-hour gas emergency service on Total Gas and Power - 0800 111 999
- Evacuate the buildings as per normal school emergency procedures and move the occupants to a distance of at least 250 metres away. Nominate some staff to stay at a safe distance to prevent access to the site and await the emergency qualified engineer;
- If it is safe to do so:
 - Put out naked flames
 - Open doors and windows
 - Turn off the gas supply

STAFF MUST NOT TURN ELECTRICAL SWITCHES ON OR OFF

If the general public in the neighbourhood are at risk staff should contact the police on 999.

No person shall interfere with any gas appliance or gas fitting or pipe work unless qualified and competent to do so.

3.21 Glass & Glazing Safety

An assessment of the premises to establish the school's compliance for glass and glazing, indicates that the majority of glass throughout the school is either toughened or laminated.

In areas where the glass did not conform to safety requirements, where the glazing has not been replaced, safety film has been applied and these areas are regularly checked for damage or deterioration. It is important to recognise that within the park and away from the main school site some of the out buildings and greenhouses still have original glass intact which is protected by our heritage status. These areas have been identified, are monitored and out of bounds to students.

All replacement glass fitted is either toughened or laminated and complies with industry standards.

All glass is disposed of in a safe manner. Please refer to section 3.42.

3.22 Health and Safety Committee – Terms of Reference

Please [Click Here](#) to view the Terms of Reference

3.23 Legionella

Legionnaires' disease is a potentially fatal form of pneumonia caused by inhaling small droplets of water that are infected with the legionella bacteria. It can affect anybody, but some people are at higher risk, including those over 45, smokers and heavy drinkers, those suffering from chronic respiratory or kidney disease, and people whose immune systems are impaired. The bacteria occur naturally in rivers, lakes etc as well as in the water systems of premises, such as schools.

Specific Responsibilities

The organisations specific day to day responsibilities for water safety include the duty to:

- Identify and assess sources of risk
- Prepare a scheme (or course of action) for preventing or controlling the risk
- Implement and manage the scheme
- Keep records for a minimum of 5 years.

Day to day responsibility for monitoring and ensuring that the systems are being correctly operated lies with the Estates Bursar who will either ensure that they have undertaken sufficient training or delegate to a "competent" person. This individual will maintain appropriate records of risk assessment, testing and certification.

Water Safety Manual / Risk Assessment

Royal Alexandra and Albert School has employed WCS group Ltd, water safety specialists, to prepare a water safety manual for all the school buildings. The manual includes schematic drawings of:

- All the hot and cold water systems, water tanks, calorifiers, pipe work, taps showers, heating, and air conditioning plant in all the buildings.
- The manual then identifies and assesses the main sources of risk in every building, taking account of:
 - Water temperature
 - Potential for water stagnation in long pipe runs and "dead legs" or
 - infrequently used taps and showers
 - Potential for aerosol formation, especially in showers, taps and drinking ○ water fountains
 - Condition of the water throughout the premises
 - The use thermostatic mixing valves (in order to avoid scalding) that potentially set a favourable outlet temperature for legionella growth
 - Signs of debris in the system, such as rust, sludge or scale that could provide food for growing legionella
 - Condition of the pipe work, plant, tanks etc.
- The manual is reviewed and updated annually, or each time that a new measure is introduced.

Physical Preventative Measures

The water safety risk assessment identifies a series of preventative measures to the physical structure of our buildings that have been taken, or are planned, in order to control the risk of legionella at the school:

- All metal cold water tanks have been replaced by covered plastic tanks to ensure that they are free from debris.
- Redundant pipe work has been removed from redundant water tanks and will progressively be removed elsewhere
- All hot pipes and calorifiers/hot water tanks have been insulated.
- Water is heated and stored in the calorifiers/hot water tanks at temperatures above 60 degrees C in order to kill bacteria
- Cold water is stored below 20 degrees C, so that bacteria cannot thrive.

The manual / risk assessment is updated every time that a new measure is adopted.

Control Measures

Our risk assessments on our infrastructure identify the control measures that are necessary in order to ensure that there is no risk of contamination through legionella bacteria.

Internal Control Measures

The Estates Bursar, Head of Health & Safety and members of the Estates Team have been trained in the need for legionella prevention measures. Members of the Estates and cleaning teams, are tasked with carrying out the following regular water checks (all of which are recorded online) in order to maintain good water hygiene:

Taps

- Any cold tap that has not been used within a seven day period is flushed for 2 minutes on a weekly basis (avoiding splashing so as to minimise the creation of an aerosol)

- Any hot water tap that has not been used within a seven day period is similarly flushed for models with thermostatic valves fitted: at least 5 minutes or for ordinary taps: 2 minutes, or until the temperature reaches 60 degrees C on a weekly basis and before the water is used
- Monthly temperature checks to hot water are conducted by inserting a thermometer in the outflow of the first and last tap of each circulation system for the required period and recording the temperature. We will contact our Water Consultant about the safety implications if the hot water does not reach 50 degrees C after running for 5 minutes.
- Monthly temperature checks are carried out to the first and last cold water taps in order to ensure that they operate at below 20c after running for 2 minutes. We record the temperatures and will contact our Water
 - Consultant about the safety implications if the cold water exceeds 20 degrees C after running for 2 minutes.

Showers

- Any shower (whether heated directly by an instant water heater or through mains hot water that is not used within a seven day period is flushed through for 2 minutes. Minimising the creation of an aerosol is achieved by placing a plastic sack or similar, over the shower head or by removing the shower head and placing the hose directly over the drain outlet.
- Shower heads and hoses are dismantled and descaled quarterly.

Toilets

- Any toilet that is not used within a seven-day period is flushed each week, and the flushing mechanism on urinals checked.

Cold Water Tanks

- Temperatures are taken from the water in the tank and the water in the ball valve every six months.
- The tank is inspected visually on an annual basis.

Calorifiers/ Hot Water Tanks

- The water temperature leaving and returning to the calorifiers/ hot water tanks is inspected on a monthly basis.
- The calorifiers/hot water tanks are inspected annually.

Drains

- Debris is cleared from external drains as required

Hot Water Systems

- Hot water systems that are shut off for the holidays must be heated to 60 degrees C, and then kept at that temperature for at least one hour in order to kill all bacteria.
- Staff then flush the system before use.

Cold Water Systems

- All cold water systems that are unused during the holidays are also thoroughly flushed through before use.

External Control Services

We employ external contractors to help us to manage water safety in the following areas:

Heating plant, Air Conditioning and Condensers

- Our air conditioning equipment and our evaporative condensers are serviced annually.
- Our boilers and heating plant are serviced annually.
- The calorifiers/hot water tanks are checked and descaled if required.
- The heating system is serviced, sludge removed if required.
- Inhibitor chemicals are topped up.

Water Sampling

- An accredited Water Consultant conducts the following sampling and analysis of our water supplies:
 - Annually: The thermostats on taps are checked and repaired/replaced.
 - Annually: Cold water tanks and pumps are inspected
 - Regular sampling of water outlets across the site
 - Chlorination as required to ensure water quality remains stable

Records

Records for all water system checks are kept online in the Foundation Office.

Staff Training

We invest considerable time and resources in training our Estates Team to work in a reliable and methodical fashion. We supervise their working methods and record their training.

3.24 Lifting Equipment and Lifting Operations

The organisation recognises its duties under the Lifting Operations and Lifting Equipment Regulations (LOLER) 1998 for all lifting equipment used on site and ensures that:

- All lifting equipment (including lifting accessories) is identified on a schedule which is used to ensure that each item has received the maintenance and inspection required;
- All lifting equipment has a risk assessment in place that is reviewed periodically, following any changes, and/or following any accidents, incidents or near misses;
- All lifting equipment is clearly marked with its 'safe working load' (SWL);
- Suitable storage is provided for lifting accessories to prevent accidental damage or corrosion;
- All lifting equipment is subject to a maintenance regime in accordance with good practice and taking into account manufacturers' instructions;
- All lifting equipment is subjected to a periodic Thorough Examination and Test in line with the requirements of LOLER 1998 and an inspection report held on file;
- Improvements identified through inspections/tests are undertaken as required;
- Pre-use inspections are carried out by operators of lifting equipment and the results recorded;
- Defective lifting equipment is taken out of service whilst awaiting repair or replacement;

- Lifting equipment is only used by persons that have had suitable and sufficient information and training on their safe operation and use, and any precautions or safeguards required; and
- Operators are formally authorised to use the equipment by the Estates Bursar.

The schedule of equipment and records of maintenance and inspection are held in the Foundation office.

Records of training and authorisation for the use of lifting equipment are held on personal files in the Human Resource office.

3.25 Lone Working

The Health and Safety Executive (HSE) defines lone workers as ‘those who work by themselves without close or direct supervision.’

We have identified lone working situations which include: staff working alone in the school, on another site, travelling to/from meetings/sites, or within the school buildings and working remotely from other members of staff.

We have undertaken a risk assessment of these lone working activities and put in place risk control measures including;

- Heads of Departments and Line Managers will identify staff who are classed as lone workers, assess the risk and ensure measures are in place.
- Ensuring that other colleagues are aware of the timing and location of all appointments
- Systems are in place to monitor staff movement where appropriate
- There are means of communication available at all times
- Access control in buildings
- Arrange additional support for potentially ‘high risk’ situations
- Ensuring staff, 6th formers, visitors and contractors are easily identifiable
- Guidance to staff on driving/ travelling alone to meetings
- ‘Out of hours’ system to advise of lone working outside of normal hours.

We also provide staff with a Lone Working card to carry with the with key contact details

Where, as a result of the risk assessments, we have identified tasks that may not be undertaken as a lone worker, staff will be instructed accordingly by their manager.

Our staff are instructed that they must immediately leave any situation in which they feel uncomfortable or at risk, and that such action has the support of management.

Staff are informed of these arrangements during the new starter induction and reminded annually during inset days when updated Lone Working cards are issued.

3.26 Manual Handling

Manual handling can be defined as the transporting or supporting of a load by hand or by bodily force, including lifting, lowering, carrying, pushing or pulling. This includes the use of manual handling aids such as trolleys, sack trucks etc. A load can include a person (e.g. nursery child) or animal, as well as inanimate objects, but not an implement, tool or equipment while in use for its intended purpose. This section also covers “positive touch” and any other student intervention techniques.

The organisation recognises its responsibilities under the Manual Handling Operations Regulations 1992, as amended in 2002 to:

- Avoid the need for hazardous manual handling, so far as is reasonably practicable;
- Assess the risk of injury from any hazardous manual handling that can’t be avoided; and
- Reduce the risk of injury from hazardous manual handling, so far as is reasonably practicable.

Risk Assessment

Heads of Departments and Line Managers will assess the risk to their staff members, pupils and other individuals who may be affected by their activities. This is done by firstly identifying and listing tasks with a potential to cause injury from manual handling or the need for physical intervention and carrying out manual handling risk assessments.

If the activity cannot be eliminated, a risk assessment is carried out in line with the guidance provided by the Health and Safety Executive (HSE) available at: <http://www.hse.gov.uk/pubns/indg143.pdf> and control measures implemented to reduce the risk so far as is reasonably practicable. Risk Assessments are reviewed annually, where there is a significant change to the activity, and/or following any accidents, incidents or near misses.

Training and Supervision

The school ensures that adequate guidance, information and training is provided to persons carrying out manual handling activities or may require “positive touch” training.

Injuries

Any injuries or incidents relating to manual handling are recorded and investigated, with remedial action taken when necessary.

To reduce the risk of injury, the school implements the following control measures where possible:

- Mechanical assistance (e.g. manual handling aids such as trolleys, sack trucks etc.);
- Redesigning the task;
- Reducing risk factors arising from the load;
- Improvements in the work environment; and/or
- Employee selection & training.

No employee is required to lift any item that they do not feel confident of doing without risking personal injury.

Persons at Increased Risk

New and expectant mothers, those with health conditions which place them at additional risk (e.g. pre-existing back conditions etc.), and persons below the age of 18 years (including pupils), are generally prohibited from carrying out hazardous manual handling activities. Where an individual in these categories, has duties which would ordinarily involve manual handling, their Line Manager is responsible for ensuring that they are not permitted to continue with these duties until the risks have been assessed.

Staff are informed of these arrangements during the new starter induction and reminded annually during inset days.

3.27 Medication

The school has separate policies relating to medication as follows:

- Health Centre Policy
- Support of Pupils at School with Medical Conditions
- First Aid policy [Click Here](#)

These must be read in conjunction with this Health and Safety Policy.

3.28 New and Expectant Mothers

Many women work while they are pregnant and may return to work while they are breastfeeding. Some hazards in the workplace may affect the health and safety of new and expectant mothers and of their children. Therefore, working conditions normally considered acceptable may no longer be so during pregnancy and/or while breastfeeding.

To implement effective measures for new and expectant mothers the school will ensure that:

- Employees should inform their Line Manager and HR of their condition at the earliest possible opportunity and are assured that the highest level of confidentiality will be maintained at all times;
- On receiving written notification from an employee that they are pregnant or breastfeeding, a member of the HR team, supported by the Head of H&S as required, will assess specific risks to the new/expectant mother and will do what is reasonably practicable to eliminate, reduce or control those risks. The risk assessment will be recorded and retained on file and reviewed following any changes.
- Where risks cannot be eliminated or reduced to an acceptable level then consideration will be given to adjusting working conditions and/or hours or, if necessary, providing suitable alternative work or suspension with full pay;
- Necessary control measures identified by the risk assessment are implemented, followed, monitored, reviewed and, if necessary, revised;
- New and expectant mothers are informed of any risks to themselves and/or their child and the control measures taken to protect them;
- New and expectant mothers are not permitted to work with chemicals of a mutagenic/teratogenic
 - classification;
- New and expectant mothers are not permitted to undertake hazardous manual handling activities;
- Any adverse incidents are immediately reported and investigated;

- Appropriate training etc. is provided where suitable alternative work is offered and accepted;
- Provision is made to support new and expectant mothers who need to take time off work for medical reasons associated with their condition; and
- Where relevant, a suitable rest area is provided to enable the new or expectant mother to rest in a degree of privacy and calm.

3.29 Noise

Work activities, especially those carried out by the Estates team, include some processes which produce high levels of noise. Royal Alexandra and Albert School, the charitable Foundation and Gatton Trust recognises its responsibilities under the Control of Noise at Work Regulations 2005 to:

- Act to reduce the noise exposure;
- Provide employees with personal hearing protection;
- Ensure that the legal limits on noise exposure are not exceeded;
- Maintain and ensure the use of equipment provided to control noise risks; and
- Provide employees with information, instruction and training.

The organisation also ensures that for activities, equipment, machinery etc. producing high levels of noise, a risk assessment is carried out and recorded. The risk assessment means more than just taking measurements of noise – measurements may not even be necessary. The risk assessment should:

- Identify where there may be a risk from noise and who is likely to be affected, including:
 - risks to health; and
 - risks to safety;
- Contain an estimate of employees' exposures to noise;
- Identify what needs to be done to comply with the law, e.g. whether noise-control measures and/or personal hearing protection are needed, or whether working practices are safe; and
- Identify any employees who need to be provided with health surveillance and whether any are at particular risk.

Where the risk assessment has revealed a potential risk due to noise, control measures have been implemented. The purpose of these control measures is to eliminate hazardous exposure and to reduce noise exposure to as low a level as is reasonably practicable. For tasks which involve exposure above the first action level of 80dB(A), we provide personal hearing protection to staff. Ear defenders are provided to all staff in the Trust, Estates and grounds maintenance teams and they are expected to wear them for all work with noise-generating machinery/equipment, regardless of whether the upper action value of 85dB(A) has been exceeded.

Employees who are issued with hearing protection are instructed in its correct use and on the storage, maintenance and replacement arrangements. They are also instructed in noise hazards and the reasons for the noise controls and wearing of hearing protection.

3.30 Personal Protective Equipment (PPE)

Personal Protective Equipment (PPE) means all equipment, including accessories, additions and clothing which is intended to be worn or held by a person at work to protect that person against one or more risks to health or safety.

The organisation recognises its duties under the Personal Protective Equipment at Work Regulations 1992 (as amended) and provides PPE when the risk presented by a work or learning activity cannot be eliminated or adequately controlled by other means. When it is provided, it is because health and/or safety hazards have been identified that require the use of PPE and it is therefore necessary to use it in order to reduce risks to a minimum.

To effectively implement its arrangements for the use of PPE the Trust will:

- Ensure that PPE requirements (including suitability) are identified when carrying out risk and COSHH assessments;
- Use the most effective means of controlling risks without the need for PPE whenever possible, and only provide PPE where it is necessary as a 'last resort';
- Ensure that if two (or more) items of PPE are used simultaneously, they are compatible and are as effective used together as they are when used separately;
- Ensure PPE is available to all staff (provided free of charge) and pupils who need to use it;
- Record who has been assigned PPE, if it is for their own personal use only (on the Personal Protective Equipment Record form provided at appendix 6);
- Provide adequate accommodation for correct storage of PPE;
- Provide adequate maintenance, cleaning and repair of PPE;
- Inform staff of the risks their work involves and why PPE is required;
- Instruct and train staff in the safe use and maintenance of PPE;
- Make arrangements for replacing worn or defective PPE; and
- Review risk/COSHH assessments and reassess the need for PPE and its suitability annually, when there are significant changes, and/or following any accidents, incidents or near misses.

It is a legal requirement that employees use the PPE provided by the school, and ensure it is stored in the correct area for use by all personnel. If staff are found not to be wearing PPE as required, they will be subject to disciplinary action. Defects or loss of PPE should be reported to the Head of Department and/or Estates Bursar immediately.

The school also recognises that PPE is required for pupils undertaking certain activities, as assessed through risk assessments (e.g. science experiments, sporting activities). The school ensures that pupils wear such PPE and that they are briefed in the importance of wearing the PPE (e.g. safety glasses/goggles, harnesses / sports mouth guards etc.).

3.31 Pressure Systems

The organisation recognises its duties under the Pressure Systems Safety Regulations 2000 and Pressure Equipment Regulations 1999 for all pressure systems/equipment on school site (e.g. boilers, autoclaves, pressure cookers, steam ovens etc.).

The metal from which the pressure vessels are constructed may become corroded. Pressure vessels include some mechanism for regulating the pressure of steam that builds up internally; normally steam is released to maintain a constant working pressure. Severe corrosion and failure of pressure-regulating and other safety valves could lead to an explosion.

To ensure the safety of the pressure vessels used and to meet the requirements of the legislation the school will:

- Establish the safe operating limits of the equipment;
- Provide adequate instructions to ensure the equipment is operated safely, and instructions for procedures to be followed in case of emergency;
- Ensure that the equipment is properly maintained;
- Have a suitable written scheme drawn up or certified by an external competent person for the examination, at appropriate intervals, of the equipment; and
- Arrange to have examinations carried out by an external competent person at the intervals set down in the scheme and keep adequate records of the examinations. Records are held in the Foundation Office.

3.32 Risk Assessment

The organisation recognises that we have a legal obligation to reduce the risk of accidents and/or ill health in the workplace by managing the health and safety risks within the workplace and/or during school related events and activities that take place offsite.

The Head of Health and Safety (through the Health and Safety Committee) will ensure that a risk assessment survey of the premises, methods of work and all school-sponsored activities is conducted annually (or more frequently if necessary). This survey will identify all defects and deficiencies, together with the necessary remedial action or risk control measures. The results will be reported to the Governing Body.

The Bursar & Foundation Secretary (through the Health and Safety Committee) will initiate an annual system of inspections of premises, equipment and facilities after the risk assessment has been carried out. Any work required to rectify any matters identified will be entered onto the ticketing system for immediate attention and signed off by the Estates Team Leaders and Head of Health & Safety when complete.

The Headteacher chairs the Health and Safety Committee and is responsible for day to day oversight of Health and Safety.

The organisation makes use of model risk assessments, including from the Key, CLEAPPS and Hettle Andrews, as a basis for our educational activities and visits. We provide access to professional training courses for both teachers and technicians who work in these areas. All teaching staff and technicians receive regular induction and refresher training in risk assessments tailored to their specific areas.

Select trips and visits risk assessments are reviewed via SCC EVOLVE who will evaluate and authorise or request further measures are implemented before a trip or visit can go ahead.

Risk assessments are reviewed at least annually, or more often if there have been changes in the matters to which they relate.

Please [Click Here](#) to access the Risk Assessment Policy for further information

3.33 Security

The Bursar & Foundation Secretary and the Estates Bursar will endeavour to ensure the school is a secure environment for all who work or learn here which includes ensuring safe access and egress to and from site. There is a security risk assessment in place which is reviewed annually and available upon request from the Head of Health & Safety.

To ensure the safety and security of the school premises, staff, student and visitors we ensure:

- All employees of Gatton Trust, the Foundation and Royal Alexandra and Albert School hold a valid DBS certificate, or have a risk assessment in place via the HR Manager or their Line Manager and will have attended Safeguard Training.
- All adult visitors to the school who arrive in normal school hours will be required to sign in online in either Main Reception or the Foundation Reception, and to wear an identification badge at all times whilst on the school premises.
- Any visitors not holding an enhanced DBS certificate will need escorting around the site at all times during term time and holiday unless other arrangements have been agreed prior to their arrival on site.
- All visitors, including contractors, sign in and out and are made familiar with the security, fire, accident and emergency procedures and where appropriate will have read and signed the Asbestos register
- For further detail on the management of all visitors to the site, please refer to the Adults on Site Policy.
- All vehicles entering the site are logged on the ANPR system which can be used to identify and track vehicles as required.
- Teachers will not allow any visitor to enter their classroom if the school visitor's badge does not identify them.
- If any adult working in the school has suspicions that a person may be trespassing on the school site, they must inform a member of the Senior Management Team, Security Guard if on site, Estates Bursar, Estates Team or office staff immediately. The intruder will be asked to leave the school site straight away. If staff have any concerns that an intruder may cause harm to anyone on the school site, s/he will initiate the school's emergency lockdown procedure and contact the police.
- Any incident involving physical violence against a teacher will be reported to the Health and Safety Executive and the teacher in question may, if he or she wishes, have the matter to be reported to the police
- All external doors will be protected by locking or by the use of code locks as appropriate. External fire doors will have security locks appropriate to ensure external security while opening from the inside to allow exit in an emergency.
- CCTV is operational 24hrs a day where required.

This section will be reviewed and updated following the installation and implementation of a new traffic calming and security measures due Autumn 2023.

3.34 Slips, Trips and Falls

The organisation recognises that slips, trips, and falls are the highest cause of injuries within the education sector, and therefore we have reviewed all of our premises for slip, trip and fall hazards and have acted to resolve the issues identified and recorded in our risk assessments.

The prevention of slip and trip accidents in the workplace relies on the involvement of all staff and everyone is encouraged to deal with hazards as soon as they are identified. Staff are instructed in the importance of storing equipment in

designated locations and in particular keeping walkways free from obstructions and trailing cables. They are also encouraged to report hazards, seeking assistance with any which they cannot personally resolve.

Housekeeping standards and the condition of flooring, steps, stairs etc. are regularly reviewed, and staff are encouraged to report any defects as soon as possible to either the Domestic Services Manager (for housekeeping) or the Estates Team via the ticketing system. Where an immediate repair is not possible or practical, the area will be sealed or blocked off to prevent access whilst repairs are awaited.

We aim to ensure that storage areas are of sufficient capacity, are well managed and are under the control of an identified person.

Steps and stairs are equipped with handrails. Step edges are kept in good condition. External step edges are highlighted with yellow or white paint where necessary for visibility.

Our cleaning regimes are designed to ensure that dust, grease and other slip hazards are well controlled, with all hard flooring cleaned at least once per week. If there is a spillage, staff are responsible for ensuring that it is cleaned up promptly and any wet floor is clearly highlighted. Wet floor signs are used where floors remain wet after cleaning or as a result of other causes such as wet weather. However, floors which people are expected to use whilst wet, will be dried so far as is reasonably practicable.

Cleaning staff also remove waste on a daily basis to ensure that it does not accumulate and cause a trip hazard.

Staff working in certain areas, such as the kitchens, or cleaners who are likely to be mopping hard floors regularly, are encouraged to wear sensible non-slip footwear that minimises the chance of them suffering an accident.

Suitable and sufficient lighting is provided for normal tasks, and emergency lighting is provided to aid escape in case of lighting failure. All lighting is routinely checked as part of our workplace monitoring regime.

Arrangements are in place for dealing with ice, snow and the accumulation of leaves on a timely basis to reduce the slipping risk in our external areas.

3.35 Smoking

Smoking (including the use of e-cigarettes) is strictly prohibited across the school site with the exception of one location in the "out of bounds" area for staff only, which is closely managed. This policy applies to all employees, pupils, contractors, and visitors. Appropriate 'No Smoking' signs are clearly displayed at the entrances to and within the premises.

3.36 Stress

Stress is defined as ‘the adverse reaction people have to excessive pressure or other types of demand placed on them’. We recognise that workplace stress is a health and safety issue and acknowledge the importance of identifying and reducing workplace stressors.

We encourage a supportive culture where colleagues assist each other to ease peaks in workload. The nature of our work demands regular communication between managers and staff and plenty of opportunities for staff to share problems and seek additional support if needed. The school discourages staff from working excessive working hours and has implemented HR procedures to ensure compliance with the Working Time Regulations.

We offer support through managers; We intend that all staff will be properly resourced and trained to undertake their role. Our thorough selection processes assist us in matching individuals to the demands of each job function. Through ongoing management reviews, new starter induction procedures and annual staff appraisals, we identify and manage training and development needs. We believe in offering developmental opportunities to staff where possible and where the member of staff desires it.

If the business is intending to implement organisational or procedural changes, we ensure that managers communicate and consult with staff at an early stage.

Poor performance and attendance is actively managed to identify causes and solutions, including providing additional training or moving individuals to more suitable roles where necessary and possible. This approach also reduces the burden on other staff who would otherwise have an additional workload.

Bullying, harassment and discrimination are not tolerated and the school has policies in place in respect of these issues together with a grievance policy. All of these policies have been published to employees.

This section is due to be reviewed during Autumn 2023, to link in with the organisation's wider strategy to develop staff wellbeing and review people management.

3.37 Swimming Pool

Royal Alexandra and Albert School, the charitable Foundation and Gatton Trust recognises the importance of safe operation of the swimming pool and follows the guidance set out in the Code of Practice – Management and treatment of Swimming Pool Treatment PWTAG 2021, and have a separate Swimming Pool Safety Operating Policy (PSOP) see link below, which must be read in conjunction with this Health & Safety Policy. It covers all areas related to the swimming pool, from staffing to specific risks, and to the management of the pool.

Please [Click Here](#) to view the PSOP 2023

3.38 Tree Safety

The organisation recognises its duties to provide a safe environment for all users of the school site and parklands. Due to our rural location we have many trees on site which we are required to manage to ensure that they remain healthy, stable and that any concerns are identified, reported and rectified.

Tree safety is also referred to in the Adverse Weather risk assessment

The site is split into three areas for Tree Inspection purposes.

- School Buildings – this is the core of the site around the classrooms and boarding houses

- Wider parkland – the rest of the site
- Road corridors – the strips of woodland that run alongside the public roads that border our site. The width of these strips is equivalent to the height of the trees, which could fall into the road

School Buildings

- These areas are surveyed by Surrey County Council on a bi-annual basis.
- Work identified as part of their surveys is feedback to the Garden Manager of Gatton Trust and works are carried out by contractors.

Wider Parkland

- These areas are surveyed by qualified staff from the Gatton Trust on an annual basis (carried out in Jan/ Feb) (tree inspection sheet available upon request)
 - Garden Manager –Qualified Level 2 inspection
 - Park Warden – Qualified Level 2 inspection
- The areas of the park are assessed as either High risk or medium risk according to the level of use by school and visitors.
- The results of the surveys are prioritised and works are carried out to the identified deadline by either inhouse teams or by contractors throughout the year.
- This information is shared with GT trustees and school H&S committee
- In May and June additional surveys are carried out to assess Ash dieback. This requires the leaves to be out and must take place later in the year.
- We are able to draw on the expertise of our tree surgeon contractors and Tree inspection contractors for further clarification as required.

Road corridors

- These trees are assessed as part of the annual surveys by our staff.
- In addition, every 3 years we employ tree inspectors to carry out an additional inspection of these areas.

3.39 Vehicles on Site

Car parking at the beginning and end of the school day is a problem at most schools. Children and parents arrive and depart in a relatively short period of time and this causes congestion and danger for both drivers and pedestrians.

All employees must adhere to the following rules regarding parking, and ensure that others (e.g. parents, contractors, visitors etc.) do the same in order to keep the pupils and other pedestrians safe:

- Cars entering the school site at peak times when pupils are arriving/leaving should proceed with extreme caution and not exceed the maximum 10 miles per hour on the main routes within the school boundary;
- Cars should not stop or park on the restricted yellow marked areas;
- Cars should not stop or park on the road outside school which is extremely narrow.

- Children do not always look when they cross the road so extreme caution and low speed are essential.

All staff have access to car parking spaces utilising a permit scheme.

Workplace Road Conditions

Workplace roads are level and provide a good surface for traction. Pedestrians and traffic must be separated and where there is a requirement to cross a road then suitable crossing facilities shall be put in place. Extra care should be taken at the beginning and end of each school day to ensure vehicles entering the site do so safely and with regard to the school rules.

A maximum speed limit will be established on site and shall not exceed 10 mph.

This section is due to be updated once the new systems have been installed Summer 2023

3.40 Vibration

The organisation recognises its duties under the Control of Vibration at Work Regulations 2005 to:

- Ensure that risks from vibration are controlled;
- Provide information, instruction and training to employees on the risk and the actions being taken to control risk; and
- Provide suitable health surveillance where required.

The vibration risk is assessed as part of the machinery risk assessments completed for all Estates equipment to ensure that levels of Hand Arm Vibration (HAV) and/or Whole-Body Vibration (WBV) are reduced so far as is reasonably practicable, and that in any case staff are not being exposed to levels of vibration over and above the Exposure Limit Value (ELV) as stipulated in the regulations. Control measures include; purchasing reduced vibration tools, limiting exposure time and encouraging job rotation between staff where practical, changing work patterns to introduce more breaks and eliminate prolonged working, more regular equipment maintenance, and providing additional PPE to keep workers warm and dry etc.

Risk assessments are reviewed at least every 12 months and, in any case, when there are changes in the equipment used or work patterns.

Information and training is provided to affected employees on:

- the health effects of vibration, and how to recognise and report symptoms;
- sources of vibration and the actions we have taken to reduce risks;
- risk factors and ways to minimise the risk.

3.41 Violence at Work

Violence at work is defined by the Health and Safety Executive (HSE) as 'any incident in which a person is verbally abused, threatened or assaulted in circumstances relating to his or her employment'.

Whilst we do all that we can to avoid it, we recognise that staff are at risk of violence perpetrated by other members of staff, pupils, visitors and/or contractors. To manage these risks, we have undertaken risk assessments of relevant work activities, particularly for the purpose of identifying violence risk factors and ensuring that control measures are implemented to reduce the risk so far as is reasonably practicable.

Training is provided for all teaching staff as part of their vocational training, in order to better equip them for dealing with violence perpetrated by pupils, or other persons. Where a pupil has a known tendency towards behavioural challenges, a specific plan will be devised.

With regards to violence between the pupils of the school, all break times and all areas within the school are supervised by staff members. Staff are also instructed on avoiding physical confrontation or restraint of pupils, so far as is reasonable to ensure the safety of themselves and other pupils. The school has separate Rewards and Behaviour Management Policy, Physical Intervention and Restraint of Pupils and Anti-Bullying Policies in place. These must be read in conjunction with this Health and Safety Policy.

All incidents of violence towards staff must be reported via the online accident and incident form and we will ensure that incidents are robustly investigated, and learning points are incorporated into working procedures and future premises designs as applicable. Where necessary, the police may be involved.

Management and access to occupational health support is offered to those who have suffered from verbal abuse, threatening behaviour, and/or physical assault and it is our policy to involve the Police and seek a conviction of any person who assaults our staff.

3.42 Waste Management and Disposal

As an organisation we recognise that we have a legal responsibility to ensure that we produce, store, transport and dispose of our waste in a timely manner without harming the environment.

We ensure that:

- We segregate, store and transport waste appropriately and securely, making sure that we do not cause any pollution, harm to human health or increased fire load.
- Check that waste is transported and handled by staff or contractors that are authorised to do so
- Complete waste transfer notes, including a full, accurate description of the waste, to document all waste you transfer where appropriate, and keep them as a record for at least two years.
- Complete consignment notes for movements of hazardous/special waste.
- Internal rubbish bins are emptied daily by the cleaners
- External bins are emptied a minimum of twice weekly
- The School recycles paper, card and textiles. This is collected from the school site on a weekly basis
- All non-contaminated waste glass is removed safely by the Science technicians and disposed off in the glass bins available on site. Contaminated waste glassware will be cleaned and disposed of following guidance from CLEAPPS
- All other waste glass is disposed of using the allocate glass bins on site
- Fluorescent lighting tubes and other hazardous bulbs are discouraged but if required, securely stored and disposed of via a recycling centre.

- All electrical and electronic waste is disposed of in accordance to the WEEE Directive 2002/96/EC
- All hazardous chemicals are handled by either Science or the Estates team and disposed of in accordance with the guidelines set by CLEAPPS.
- Asbestos is only ever removed by contractor under licence see section 3.2.
- All sharps are placed in sharps boxes which are kept securely in the Health Centre and on occasion the Boarding Houses. When they are full they are either collected by the student's parent or taken to the nearest pharmacy for safe disposal.
- Royal Alexandra and Albert refer to SCC guidelines on clinical waste management to deal with all clinical waste
- Health Centre, Boarding Staff and Estates staff use appropriate clean up kits to deal with bodily fluids, which are bagged appropriately and disposed of as clinical waste.
- The clinical waste bin and sanitary bins are collected by a contractor on a fortnightly basis.
- Queries regarding disposal should be directed to the Estates Manager or the Head of Health & Safety

3.43 Welfare Facilities

The organisation will comply with the Workplace (Health, Safety and Welfare) Regulations 1992 in order to promote an organisation wide culture of health, safety and welfare in the workplace.

Maintenance of Workplace, Equipment, Devices and Systems

All equipment, devices and systems which fall under the scope of these regulations, including the workplace itself, will be maintained (including being cleaned as appropriate) in an efficient condition and in a good state of working order and repair. Where appropriate this will include such items being subject to a suitable system of maintenance.

Ventilation

Effective and suitable provision will be made to ensure that every enclosed work and teaching spaces re well ventilated by a sufficient quantity of fresh or purified air. For health and safety purposes, any plant used to achieve this purpose will include an effective device to give visible or audible warning of any failure of the plant and a regular maintenance in place.

Temperature in Indoor Places

Although no values are accorded to temperatures in the regulations, the school ensures that, during working hours, the temperature inside buildings is reasonable, i.e. has achieved 16°C within one hour of work commencing. To achieve a reasonable indoor temperature the school will not use a method of heating or cooling which results in the escape into the workplace of fumes, gas or vapour which could be injurious or offensive to any person.

Lighting

Every workplace inside the school should have suitable and sufficient lighting suitable to the tasks performed. Such lighting will, as far as is reasonably practicable, be natural and emergency lighting will be provided in any room in circumstances where occupants would be exposed to dangers in the event of the failure of artificial lighting. All employees should inform a member of the Estates team if lighting is not adequate.

Cleanliness, Floors, Traffic Routes and Waste Materials

All work areas, classrooms, furniture, furnishings and fittings are kept sufficiently clean. Surfaces of walls, floors and ceilings of all work and teaching spaces inside buildings will be capable of being kept sufficiently clean. As far as is reasonably practicable, waste materials are not allowed to accumulate in any work and teaching spaces except in suitable receptacles.

The construction of all floors and traffic routes are suitable for the purpose for which it is used, including the absence of unevenness, holes (unless suitably guarded to prevent falls), slopes (unless suitably hand railed) and slippery surfaces that constitute a risk to health and safety. All floors have an adequate means of drainage where necessary.

So far as is reasonably practicable all floors and traffic routes are kept free of obstructions, articles and substances that may cause a person to slip, trip or fall.

All traffic routes which are staircases are fitted with suitable and sufficient handrails and where appropriate, guardrails, unless a handrail cannot be provided without obstructing the traffic route.

Windows, and Transparent or Translucent Doors, Gates and Walls

Where necessary for reasons of health and safety, any window or other transparent or translucent surface in a door or gate are of safety material or are protected against breakage, and are appropriately marked or incorporate features so as to make it apparent.

Windows, Skylights and Ventilators

No window, skylight or ventilator which is capable of being opened is likely to be opened, closed or adjusted in a manner which exposes any person performing such an operation to a risk to their health or safety and no window, skylight or ventilator is permitted to be in a position that, when open, exposes any person in the school to a risk to their health and safety (e.g. limiters fitted where necessary).

All windows and skylights in a workplace are designed or constructed so as to be able to be cleaned safely. Where this is not the case alternative arrangements have been devised so as to render the window cleaning operation safe and without risks to health.

Doors and Gates

Doors and gates are suitably constructed (including being fitted with safety devices where appropriate) and:

- Any sliding door or gate will be fitted with a device to prevent it coming off its track during use;
- Any powered door or gate will have suitable and effective features to prevent it causing injury by trapping any person, and, where necessary for reasons of health and safety, can be operated manually unless it opens automatically in the event of a power failure e.g. roller shutter in the kitchen; and
- Any door or gate which is capable of opening by being pushed from either side will be constructed so that there is vision on both sides e.g. 5 barred gates on school playground.

Sanitary Conveniences

Suitable and sufficient sanitary conveniences are provided at readily accessible places. The rooms containing the sanitary conveniences are adequately ventilated and lit and are kept in a clean and orderly condition. Separate facilities will be provided for pupils at a rate of at least one toilet for every 10 pupils under five years, and one for every 20 pupils over that age, to meet legal requirements.

Drinking Water

An adequate supply of wholesome drinking water will be provided for all persons in the workplace. Additionally, suitable and sufficient drinking vessels will be provided unless the supply of drinking water is in a jet from which persons can drink easily.

Staff Facilities for Rest and to Eat Meals

Suitable and sufficient rest facilities, in the form of rest rooms or rest areas, will be provided at readily accessible places, including suitable facilities to eat meals. Rest rooms and/or areas will include arrangements and facilities for pregnant women or nursing mother to rest.

Filing and storage

Incorrectly used filing cabinets can become unstable. If too many drawers are opened at one time they may topple over. All filing cabinets are to have the lowest drawer loaded first and only one drawer is to be opened at a time.

All racking shall be of adequate strength for the loads placed upon them and shall be rigidly secured to adjacent racks or the wall of the building. Steps or ladders are to be used to gain access to the higher levels of shelving. Heavy items shall not be placed on the higher shelves.

Prior to the installation of racking or filing cabinets, the floor strength is to be ascertained to ensure that the floor is capable of withstanding the load to be applied to it.

3.44 Work at Height

The organisation recognises its duties under the Work at Height Regulations 2005 to:

- Avoid work at height where it is reasonably practicable to do so;
- Where work at height cannot be avoided, prevent falls using either an existing place of work that is already safe or the right type of equipment; and/or
- Minimise the distance and consequences of a fall, by using the right type of equipment where the risk cannot be eliminated.

The organisation also ensures that:

- All work activities that involve work at height are identified and risk assessed;
- The need to undertake work at height is eliminated whenever it is reasonably practicable to do so;
- All work at height is properly planned and organised;
- Employees are competent to use the access equipment required, and are familiar with the need to carry out pre-use safety checks;
- Suitable training is provided as to the access equipment used, this includes general work at height training, specific guidance for ladders and stepladders, PASMA Towers for Users training in the use and inspection of mobile tower scaffolds, and IPAF Operator training in the use of Mobile Elevated Work Platforms (i.e. cherry pickers etc.);

- Regular inspections of all stepladders, ladders or other access equipment are undertaken and recorded on the Work at Height Equipment Inventory;
- Any contractors on school property comply with this policy;
- Ladders and stepladders are secured to prevent unauthorised use.

Risk Assessment for Work at Height

A risk assessment is conducted by the Head of Health & Safety and the findings recorded for all activities involving work at height and communicated to relevant staff. The assessment considers both the work to be done and the most appropriate access equipment to be used to achieve a safe system of work, and control measures are determined. The detail of the assessment will depend on the level of risk involved. Assessments will be reviewed by the Head of Health & Safety if no longer valid, or there is significant change in the matter to which it relates, and/or following any accidents, incidents or near misses.

Equipment identification / inspection

The school compiles a register of equipment. The equipment is inspected prior to use and by a competent person.

Using Ladders (including stepladders) Ladders should:

- Be EN131 (commercial) standard;
- Not be used simply because they are readily available, the risk assessment determines if a ladder or stepladder is appropriate for the task;
- Only be used for short duration tasks (less than 30 minutes), light duty tasks or where more suitable access equipment cannot be used due to existing features of the site which cannot be altered. Otherwise an alternative is sought;
- Only be used by those persons who have been trained to use ladders safely;
- Be secured against unauthorised use; and
- Always be checked prior to use to ensure that they are in good condition and fit for purpose.

Where ladders are to be used to work from, it should be ensured that:

- A secure handhold and support are available at all times;
- The work can be completed without stretching;
- The ladder can be secured to prevent slipping.

3.45 Work Equipment

All work equipment at the school used in the course of school activities, whether provided by the school, on hire, on lease, or belonging to individuals, should be safe for use, suitable for the task and properly maintained in accordance with current legislation and the manufacturers/supplier's instructions.

The Provision and Use of Work Equipment Regulations (PUWER) 1998 apply to all items of "work equipment" provided for "use" or "used", either by employees or the self-employed. In practice the school recognises that this extends to equipment used by pupils whose health and safety is protected under the general duty of care to persons other than their employees, as set out in the Health and Safety at Work etc. Act 1974. The following definitions are relevant:

- **Work equipment** - covers all machinery and tools, from a major item of construction plant to a screwdriver; and includes equipment such as ladders, scaffolding and sports/play equipment.
- **Use** - includes its cleaning, repair, modification, maintenance and servicing.

Employers have a duty to ensure that equipment provided for their employees complies with the Regulations as follows;

Suitable for Intended Use

Equipment selected must be suitable for the particular work it is provided to do, i.e. both for the operation concerned and for the conditions under which it will be used. Equipment must be maintained in a safe working order and in good repair.

All staff are required to undertake visual checks of work equipment and report defects to their Head of Department or the Estates Team Leaders.

Safe for Use

The extent of maintenance required may vary with the complexity of the equipment, but even the simplest hand tools should be subject to a visual check for defects before use. Complex equipment is likely to require routine maintenance and planned preventive maintenance, which is carried out by the school's maintenance staff in accordance with manufacturer's recommendations.

Used only by people who have received adequate information, instruction and training

All relevant health and safety information and written instructions on the use of work equipment is kept either in the area of the equipment e.g. Science Labs, grounds maintenance sheds, or in the Facilities Managers office. Pupils must be briefed on the safe use of equipment.

The information and written instructions cover all the health and safety aspects of use that are likely to arise and any limitations on these uses, together with any foreseeable difficulties that could arise and the methods to deal with them. Any omissions are resourced by contacting the relevant manufacturer/supplier.

Information can be verbal or in writing, but whichever method is chosen. All supervisors are made aware of their responsibilities to adequately train and induct staff or request additional support or training e.g. external support. Training is recorded for all personnel on the school's MIS with alerts to re-train.

Adequate training in the use of work equipment must be given to the "operators" by either experienced existing staff if appropriate or by manufacturers/external trainers etc. The need for training should be identified by Line Managers as soon as possible, i.e. upon employment and prior to the use of any new equipment/machinery.

Accompanied by suitable safety measures e.g. markings and warnings

All work equipment is marked with appropriate health and safety warning signs and notices such as:

- The maximum safe working load on lifting equipment
- Hazard symbols on dangerous substances

Warnings are normally in the form of notices or signs. The latter should conform to the Health and Safety (Safety Signs and Signals) Regulations, 1996. Warning devices, e.g. reversing alarms on site mechanical plant, must be clear and easily understood.

Protection against Specific Hazards

Work equipment must incorporate protection against certain specific hazards including:

- Material falling from equipment (e.g. a loose board falling from scaffolding);
- Material held in the equipment being unexpectedly thrown out (e.g. swarf ejected from a machine tool);
- Parts of the equipment breaking off and being thrown out (e.g. an abrasive wheel bursting);
- Parts of the equipment coming apart (e.g. collapse of scaffolding);
- Overheating or fire (e.g. due to bearings running hot, or ignition by welding torch);
- Explosion of equipment (e.g. due to failure of a pressure relief valve, or unexpected blockage of pipe work); and/or
- Explosion of substance in the equipment (e.g. due to exothermic reaction, unplanned ignition of a flammable gas or vapour; or welding work on a container with flammable residues).

The risk assessment made under the Management of Health and Safety at Work 1999 Regulations by users or relevant staff e.g. teaching staff, cleaning staff, caretaking or grounds staff etc.; should identify any of the above hazards and assess the associated risks. Emphasis must be placed on reducing the risks by minimising the chance of failure of work equipment and by mitigating the effect of any failures that occur. Personal protective equipment may be appropriate where there is a need to provide further protection against risk. Training, supervision and provision of information will also have important roles to play.

Lighting for Work Equipment and Machinery

Any place where work equipment is used is suitably and sufficiently lit. The need to provide additional or special lighting will depend on the circumstances and types of task to be performed.

Inspection Requirements

An inspection is required for work equipment when it has been installed or assembled in a new location to ensure that it has been installed correctly and is safe to operate. All other work equipment must be assessed to determine if an inspection is needed and how often.

The minimum inspection regime should be set by the owner/supplier of the equipment based on manufacturers' information and other statutory obligations. Additional inspection requirements will be identified by the user of the equipment.

Factors that must be taken into account by the user include the work being carried out, any site specific risks that may affect the condition of the equipment, and the intensity of use of the equipment.

An inspection may include visual checks, functional tests and a strip down of the equipment. Advice should be sought from manufacturers' instructions and a competent person for guidance on what an inspection should include for each piece of equipment.

Types of Inspection

Low risk equipment used for low risk activities will not require a formal inspection. Visual checks are required by the user prior to each use to ensure it is in good condition, e.g. it should be checked that the head on a hammer is not loose, a ladder should be checked for broken rungs, split stiles and other defects etc. The person carrying out these checks must be competent i.e. should be trained and confident in the use of the equipment they are checking. There is no need to record the results of the visual check by the operative.

Equipment that is of a higher risk, and equipment with moving parts, should have a visual check before each use, and may require a more formal check at specified intervals, as determined by a risk assessment.

Inspection of equipment that poses a significant risk, i.e. MEWP's, mobile scaffold towers, pressure systems/equipment, lifting equipment etc. will need to be considered by a person who is competent to determine a suitable inspection regime e.g. someone who has read and understood the instructions and methods for use. These inspections are in addition to the pre-use checks by the operator and must be carried out by a competent person.

Legal Requirements for Thorough Examinations / Inspections

The table in figure 2 provides details on the statutory inspection requirements for specific types of work equipment.

Figure 2: Statutory Inspection Requirements for Work Equipment

Type of Plant/ Equipment	Inspection	Carried out by	Recorded on
Scaffolding, brought onto site by contractor	Prior to use, and weekly or after severe weather conditions	Competent Person (e.g. scaffolder / contractor)	Contractors Equipment Register
Mobile Tower Scaffold	Prior to use, and daily or after severe weather conditions	Competent Person (e.g. PASMA trained employee)	Compliance Schedule
Lifting Equipment (including accessories) used to lift objects.	Before first use. Every 12 months and after substantial repair or alteration	Competent person (e.g. insurance engineer, manufacturer)	Compliance Schedule
Autoclaves	Every 14 months	Competent person (e.g. insurance engineer, manufacturer)	Compliance Schedule
Hot water boilers with water temperature <100°C	Every 24 months	Competent person (e.g. insurance engineer, manufacturer)	Compliance Schedule
Hot water boilers with water temperature >100°C	Every 14 months	Competent person (e.g. insurance engineer, manufacturer)	Compliance Schedule

Steam boilers	Every 14 months	Competent person (e.g. insurance engineer, manufacturer)	Compliance Schedule
Steam vessels	Every 26 months	Competent person (e.g. insurance engineer, manufacturer)	Compliance Schedule

Note that any lifting equipment which normally undergoes 12 monthly inspections requires a six monthly inspection if the use is changed to lift people. For further equipment maintenance and monitoring please refer to the Compliance Schedule available from the Head of Health & Safety or the Estates Office

Hire of Work Equipment

Where equipment is hired e.g. scissor lifts and photocopiers, there is a duty under PUWER 1998 to ensure that:

- The equipment hired is suitable for the task and conditions that it is to perform;
- It has been properly maintained and inspected before work commences, with proof in the form of an inspection certificate or similar form;
- It is supplied with all relevant information (maintenance schedule, etc.) and operating instructions;
- Any necessary instruction and training is given to site operatives;
- A qualified or competent person is available to use the equipment;
- Any maintenance/inspection that is required is carried out at the correct intervals by a competent person; and
- Any equipment hired complies with The Provision and Use of Work Equipment Regulations 1998.